

PROSPERITY BANK - REMODEL

2424 MARKET STREET
GALVESTON, TEXAS 77550



ARCHITECTURE | DESIGN | CONSTRUCTION

15810 PARK TEN PLACE, SUITE 300
HOUSTON, TEXAS 77084
713-465-4650
www.sligroup.com

© COPYRIGHT

ISSUE FOR BID

BUILDING CODE AND PROJECT INFORMATION

SCOPE OF WORK
RENOVATE THE BANKING CENTER TO CREATE ADDITIONAL OFFICES, ADA IMPROVEMENTS AND UPDATE THE INTERIOR DESIGN. INSTALL A NEW ROOF AND RENOVATE THE BUILDING EXTERIOR.

BUILDING CODE
2021 IBC WITH CITY OF GALVESTON AMENDMENTS
2023 NEC WITH CITY OF GALVESTON AMENDMENTS
2021 IPC WITH CITY OF GALVESTON AMENDMENTS
2021 IFC WITH CITY OF GALVESTON AMENDMENTS
2021 IECC WITH CITY OF GALVESTON AMENDMENTS
2021 IMC WITH CITY OF GALVESTON AMENDMENTS

OCCUPANCY TYPE: B-BUSINESS

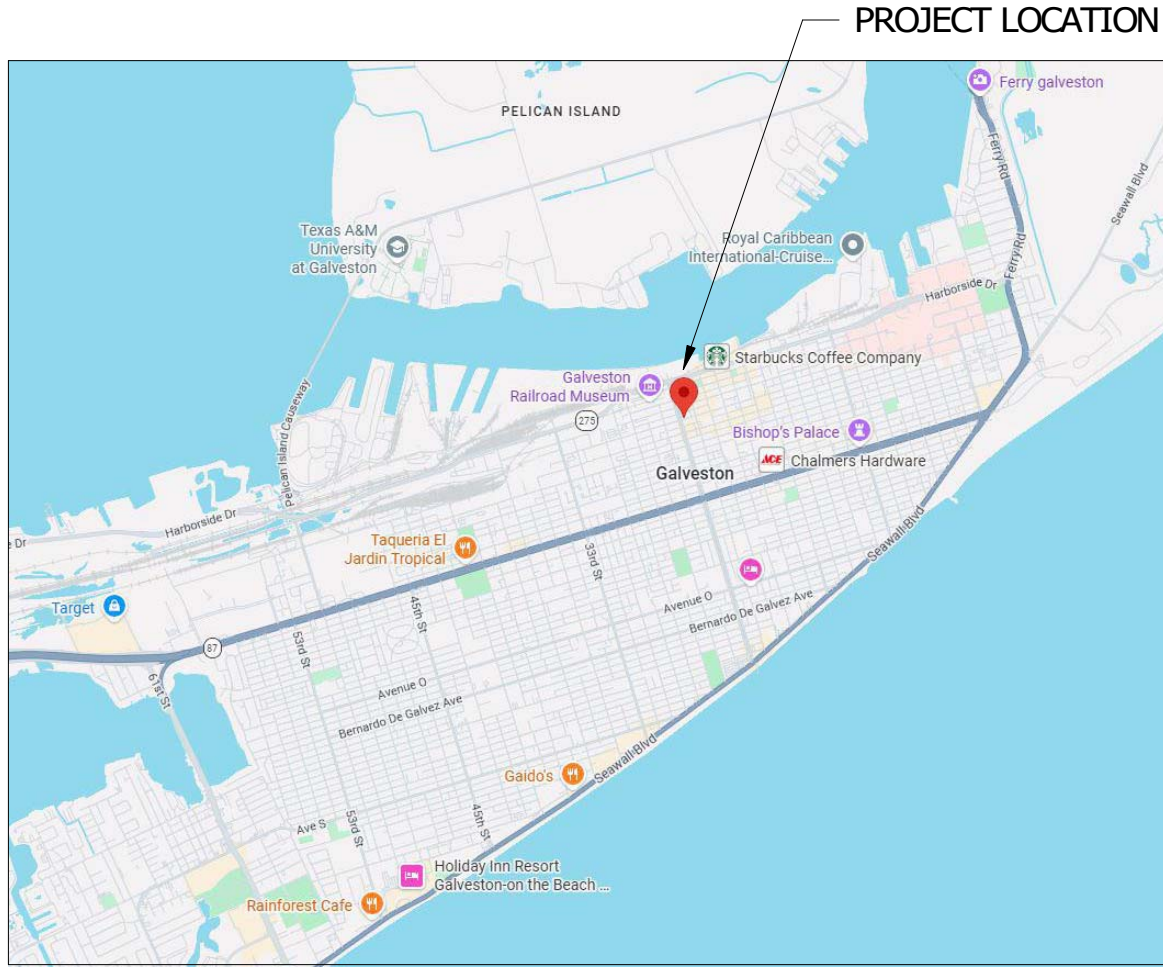
PROSPERITY BANK - REMODEL
2424 MARKET STREET
GALVESTON, TEXAS 77550

Project Number : 8973

RENDERING



VICINITY MAP



GENERAL

- T-1.00 TITLE SHEET
- D-1.00 DEMOLITION PLAN

ARCHITECTURAL

- A-0.00 ACCESSIBILITY ROUTE COMPLIANCE
- A-0.10 ACCESSIBILITY ELEMENT COMPLIANCE
- A-1.10 FLOOR PLAN
- A-2.00 SCHEDULES
- A-4.00 REFLECTED CEILING PLAN
- A-10.00 INTERIOR ELEVATIONS
- A-11.00 MILLWORK DETAILS
- A-12.00 FINISHED FLOOR
- A-14.00 INTERIOR SIGNAGE

MEP

- M1.01 MECHANICAL PLAN
- M3.01 MECHANICAL DETAILS
- E1.01 ELECTRICAL PLAN - DEMOLITION
- E1.02 ELECTRICAL POWER PLAN
- E3.01 ELECTRICAL DETAILS
- P1.01 PLUMBING PLAN
- P3.01 PLUMBING SYMBOLS & ABBREVIATIONS
- P3.02 PLUMBING SCHEDULES & DETAILS
- P3.03 PLUMBING DETAILS

ABBREVIATIONS

ABBR	DEFINITION	ABBR	DEFINITION
AC	AIR CONDITIONER	INCL	INCLUDING
ACT	ACOUSTICAL CEILING TILE	INS	INSULATION
ADD	ADDITIONAL	INT	INTERIOR
ADJ	ADJACENT	JAN	JANITOR
AFF	ABOVE FINISH FLOOR	JC	JANITOR'S CLOSET
AFC	AT FINISH CEILING	JT	JOINT
ALUM	ALUMINUM	LP	LOW POINT
ARCH	ARCHITECTURAL	LAM	LAMINATED
BD	BOARD	LAV	LAVATORY
BFF	BELOW FINISH FLOOR	LGT	LIGHTING
BLDG	BUILDING	LAM	LAMINATED
BLKG	BLOCKING	MAX	MAXIMUM
BM	BEAM	MBM	METAL BUILDING MANUFACTURER
BO	BOTTOM OF	MECH	MECHANICAL
BRG	BEARING	MEMB	MEMBRANE
CSD	CHALKBOARD	MFR	MANUFACTURER
CI	CAST IRON	MIN	MINIMUM
CP	CAST-IN-PLACE	MISC	MISCELLANEOUS
CJ	CONTROL JOINT	MO	MASONRY OPENING
CL	CENTERLINE	MTL	METAL
CLG	CEILING	NIC	NOT IN CONTRACT
CLR	CLEAR	NO	NUMBER
CLO	CLOSET	NTS	NOT TO SCALE
CMU	CONCRETE MASONRY UNIT	OC	ON CENTER
COLN	COLUMN	OHD	OVERHEAD DOOR
CONC	CONCRETE	OPNG	OPENING
CONT	CONTINUOUS	OPP	OPPOSITE
CPT	CERAMIC TILE	OPPHD	OPPOSITE HAND
CT	DETAIL	PART	PARTITION
DET	DETAIL	PC	PRECAST
DF	DRINKING FOUNTAIN	PEMB	PRE-ENGINEERED METAL BUILDING
DI	DIAMETER	PLAM	PLASTIC LAMINATE
DN	DOWN	PT	PRESSURE TREATED
DR	DOOR	PTD	PAINTED
DWG	DRAWING	PVC	POLYVINYL CHLORIDE
EA	EACH	QT	QUANTITY
EJ	EXPANSION JOINT	QTY	QUANTITY
ELEC	ELECTRICAL	RADIS	RADIUS RISER
ELEV	ELEVATION or ELEVATOR	RA	RETURN AIR
EXT	EXTERIOR	RD	ROOF DRAIN
EQ	EQUAL	REF	REFERENCE
EQUIP	EQUIPMENT	REF	REINFORCING or REINFORCED
EXIST	EXISTING	REQ	REQUIRED
FD	FLOOR DRAIN	REV	REVISION
FN	FOUNDATION	RM	ROOM
FE	FIRE EXTINGUISHER	RO	ROUGH OPENING
FF	FIRE EXTINGUISHER CABINET	RTU	ROOF TOP UNIT
FFE	FIRE FLOOR ELEVATION	SECT	SECTION
FFT	FIRE FLOOR TRANSITION	SM	SIMILAR
FIN	FINISH	SPEC	SPECIFICATION
FIXT	FIXTURE	SQ	SQUARE
FR	FIRE-RATED	SS1L	STAINLESS STEEL
FRP	FIBERGLASS REINFORCED PLASTIC	STD	STANDARD
FRT	FIRE RETARDANT TREATED	STL	STEEL
FT	FOOT	STRUC	STRUCTURAL
FV	FIELD VERIFY	SUSP	SUSPENDED
GA	GALVE	TBD	TO BE DETERMINED or TACKBOARD
GALV	GALVANIZED	TD	TRENCH DRAIN
GC	GENERAL CONTRACTOR	TO	TOP OF
GL	GLASS	TOC	TOP OF CONCRETE
GYP BD	GYP SUM BOARD	TOSS	TOP OF STEEL
HC	HANDICAP ACCESSIBLE	TOW	TOP OF WALL
HW	HANDWARE	THK	THICK
HGT	HEIGHT	THP	TYPICAL
HM	HOLLOW METAL	UNO	UNLESS NOTED OTHERWISE
HORIZ	HORIZONTAL	VT	VINYL COMPOSITION TILE
HP	HIGH POINT	VERT	VERTICAL
HVAC	HEATING, VENTILATION, AND AIR CONDITIONING	WD	WOOD
IN	INCH	WIDW	WINDOW
		WIF	WIDE FLANGE
		WPR	WATERPROOFING

DRAWING SYMBOLS LEGEND

SYMBOLS	DESCRIPTION	SYMBOLS	DESCRIPTION	SYMBOLS	DESCRIPTION
(N)	NORTH ARROW	(P)	PARTITION TYPE	(1)	COLUMN GRID
(01)	FLOOR PLAN	(W)	WINDOW TYPE	(2)	COLUMN GRID
(A)	DRAWING NAME, NUMBER, AND SCALE	(OO)	DOOR IDENTIFICATION	(CL)	CENTERLINE
(M)	ENLARGED DETAIL REFERENCE	(R)	ROOM NAME	(---)	BREAK LINE
(E)	EXTERIOR ELEVATION	(R#)	ROOM NUMBER	(- - -)	SPOT ELEVATION
(S)	BUILDING SECTION	(I)	INTERIOR ELEVATION	(- - -)	
(W)	WALL SECTION	(D)	DIMENSION LINES	(- - -)	
(SD)	SECTION DETAIL	(M)	MATCH LINE	(- - -)	
(F)	VERTICAL ELEVATION	(R#)	REVISION NUMBER & AFFECTED AREA	(- - -)	
(FE)	FIRE EXTINGUISHER	(W)	WATERPROOFING	(- - -)	

TYPICAL MOUNTING HEIGHTS:

CONVENIENCE OUTLETS	15" (FLOOR TO BOTTOM OF BOX UNLESS OTHERWISE NOTED ON PLAN)
LIGHT SWITCHES	45" (FLOOR TO BOTTOM OF BOX)
FIRE ALARM PULL STATIONS	48" (FLOOR TO BOTTOM OF PULL)
TELEPHONE OUTLETS	15" (FLOOR TO BOTTOM OF BOX OR AS NOTED ON PLAN)
WALL TELEPHONE OUTLETS	45" (FLOOR TO BOTTOM OF BOX)
DATA CABLE OUTLETS	15" (FLOOR TO BOTTOM OF BOX)
SMOKE AND HEAT DETECTORS	CEILING MOUNTED

GENERAL NOTES:

- NOTIFY ARCHITECT OF ANY DISCREPANCIES AND/OR OMISSIONS.
- ALL WORK SHALL COMPLY WITH ALL FEDERAL, STATE, AND LOCAL ORDINANCES.
- ALL DIMENSIONS ARE TO FINISHED FACE OF PARTITIONS.
- ALL DOORS ON AN ACCESSIBLE ROUTE SHALL HAVE A MIN. 18" CLEAR ON THE PULL SIDE. A MIN. 12" CLEAR ON THE PUSH SIDE WHEN DOOR IS EQUIPPED WITH BOTH A LATCH AND CLOSER.
- ALL DOORS TO RECEIVE NEW AMERICAN DISABILITIES ACT COMPLIANT HARDWARE.

PROJECT TEAM

ARCHITECT/CONTRACTOR
SLI GROUP
15810 PARK TEN PLACE, SUITE 300
HOUSTON, TEXAS 77084
713-465-4650

MEP ENGINEER
JONES ENGINEERS, L.P.
9820 WHITHORN DRIVE
HOUSTON, TEXAS 77095
713-222-7766

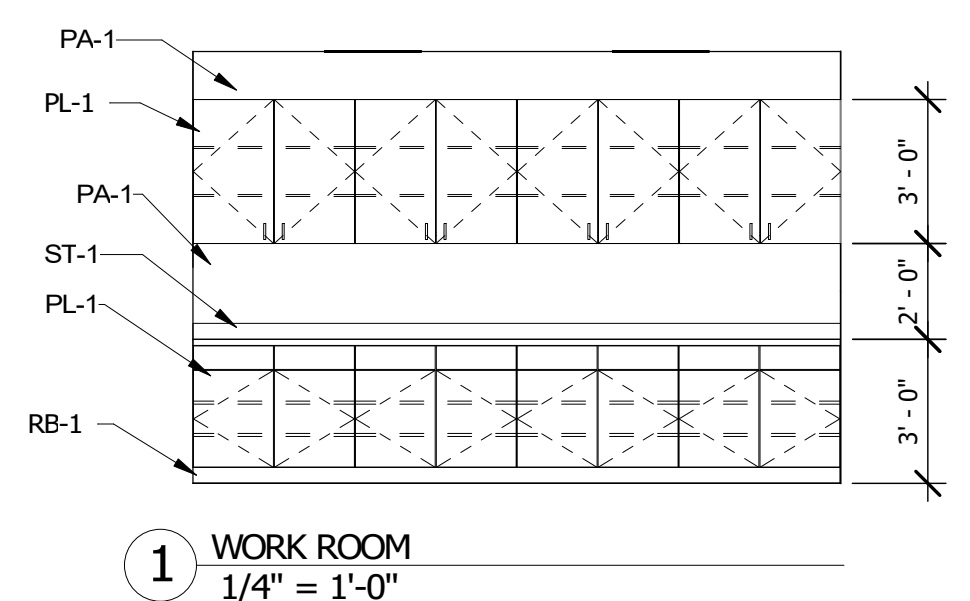
PRINT DATE: 2/25/2026 11:31:12 AM



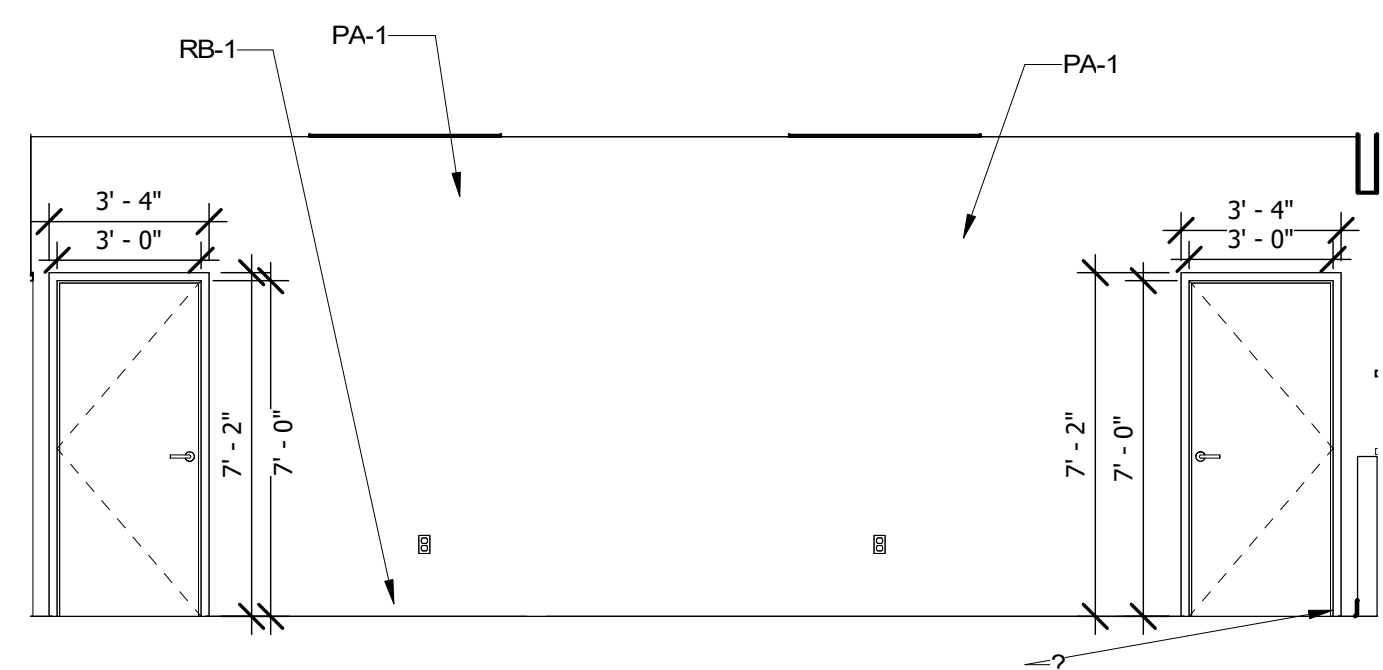
02/25/26

DRAWING TITLE	
TITLE SHEET	
DRAWN BY	DRW
CHECKED BY	CHK
APPROVED BY	APR
SHEET NO.	
T-1.00	

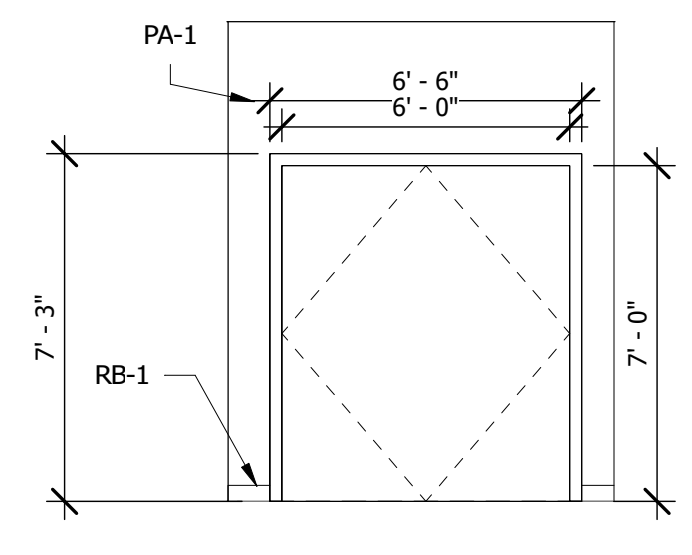
SPACE LEFT BLANK FOR STAMP



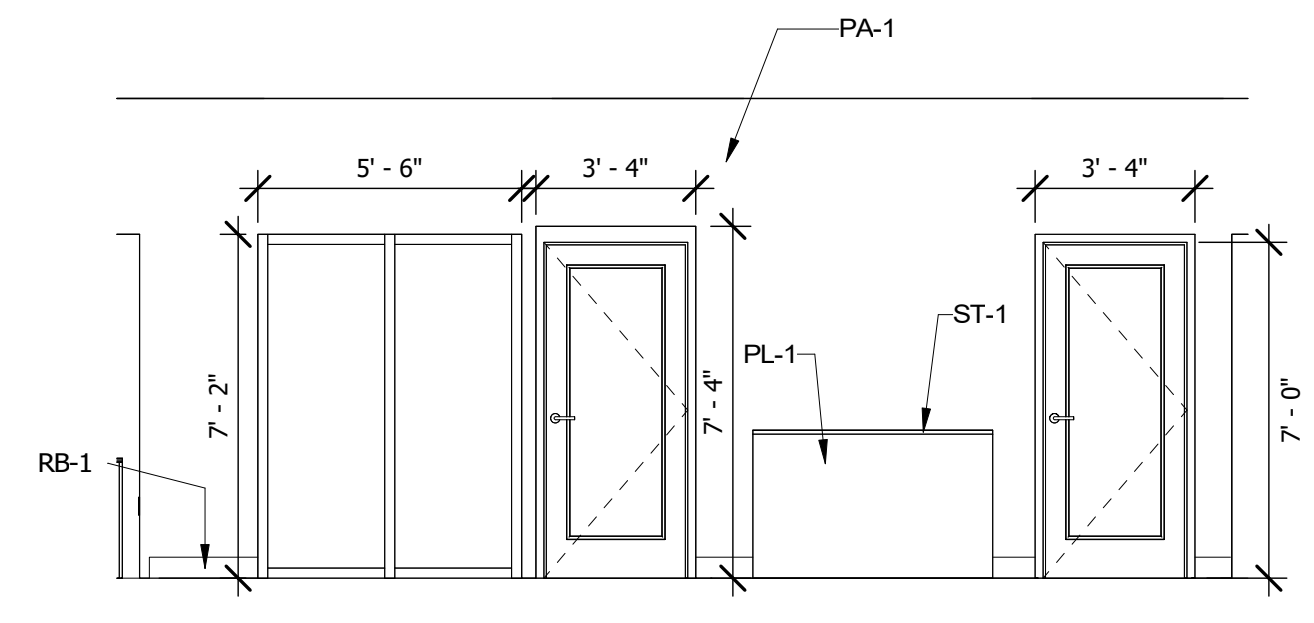
1 WORK ROOM
1/4" = 1'-0"



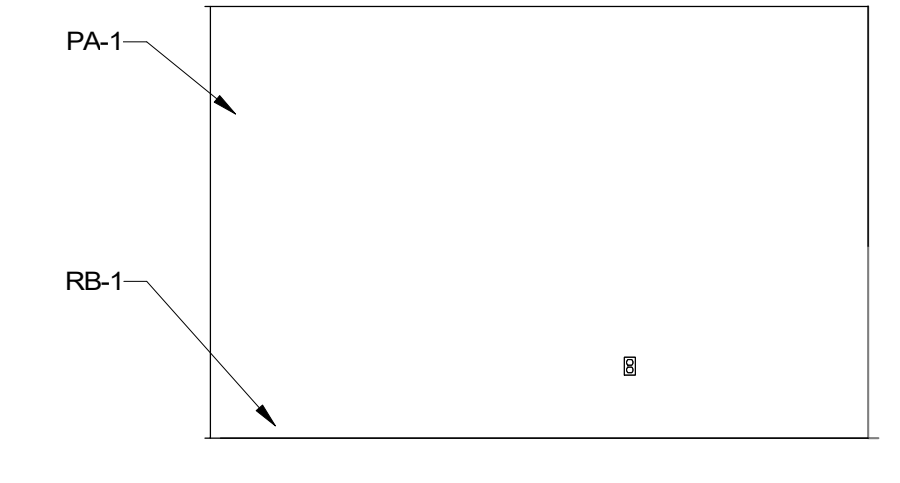
2 LOBBY SW
1/4" = 1'-0"



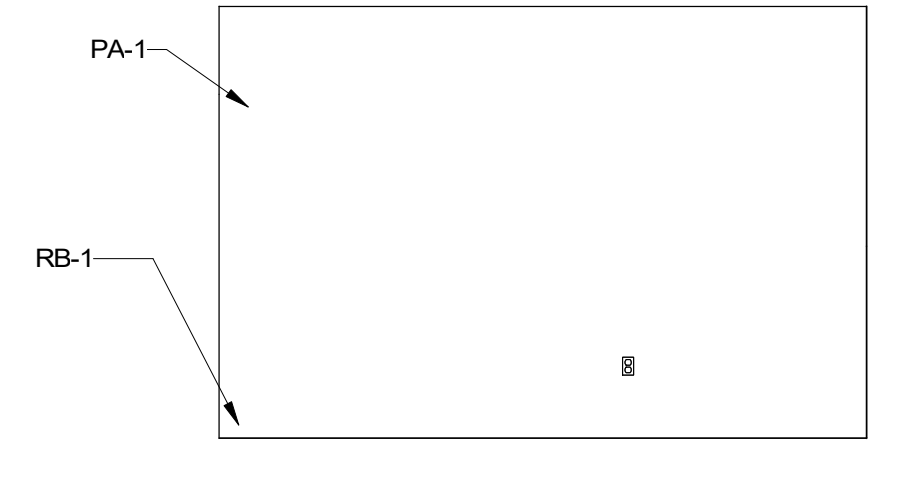
3 LOBBY ENTRANCE
1/4" = 1'-0"



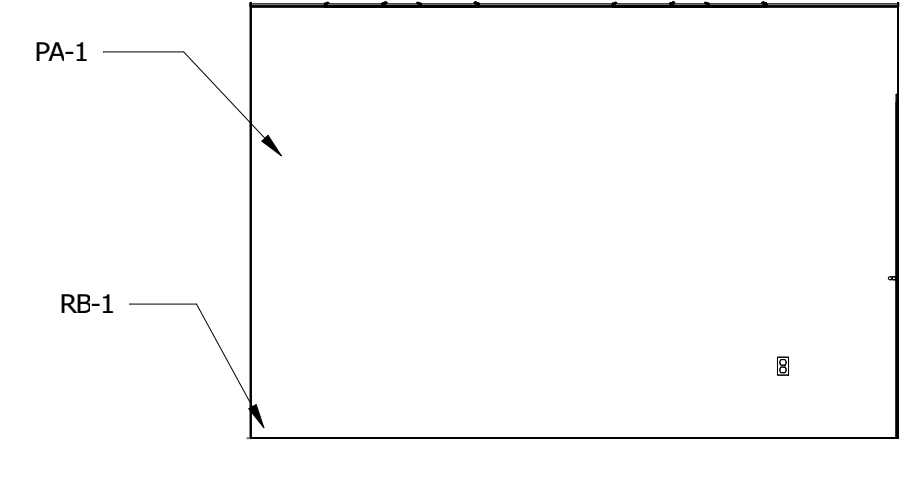
4 CHECKSTAND
1/4" = 1'-0"



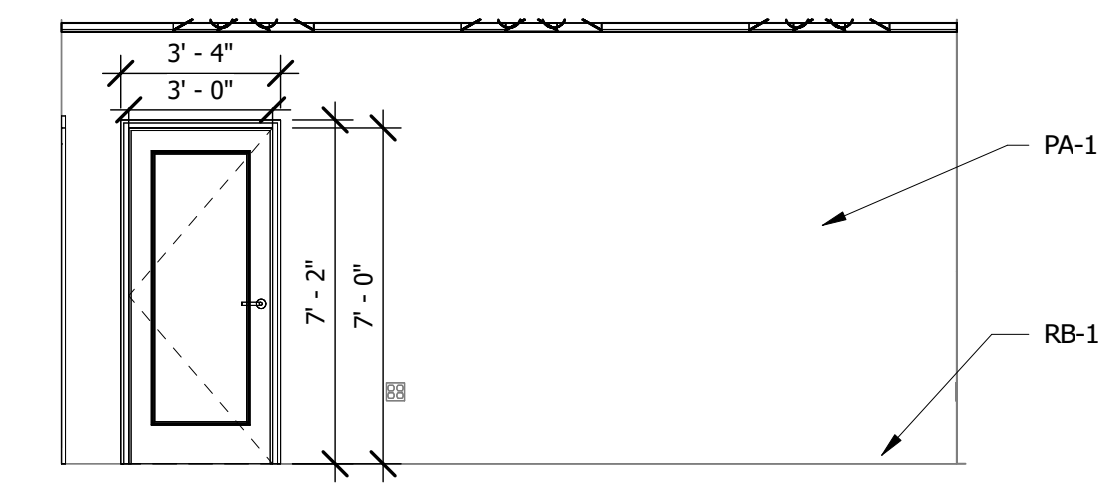
5 OFFICE 101
1/4" = 1'-0"



6 PERSONAL BANKER 102
1/4" = 1'-0"



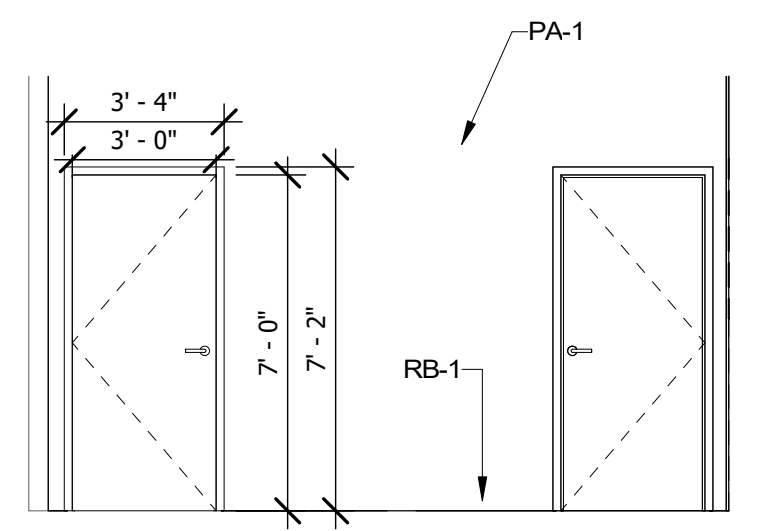
7 PERSONAL BANKER 105
1/4" = 1'-0"



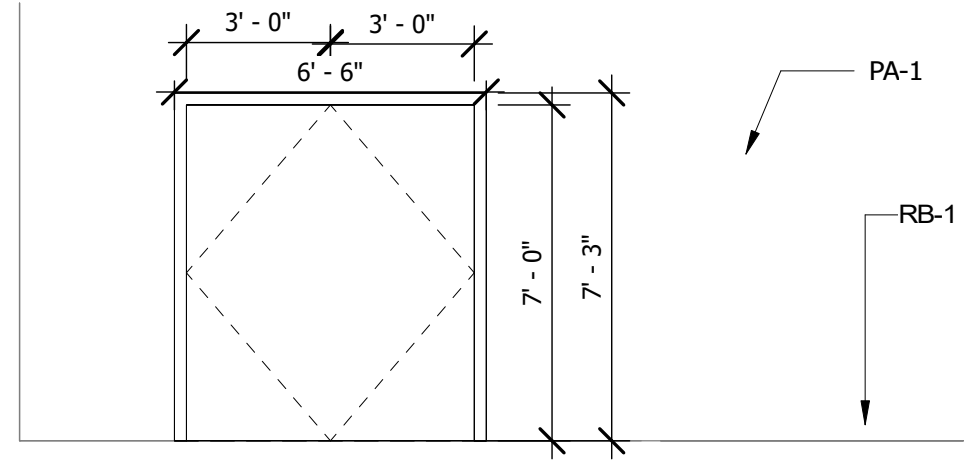
8 PRESIDENT
1/4" = 1'-0"



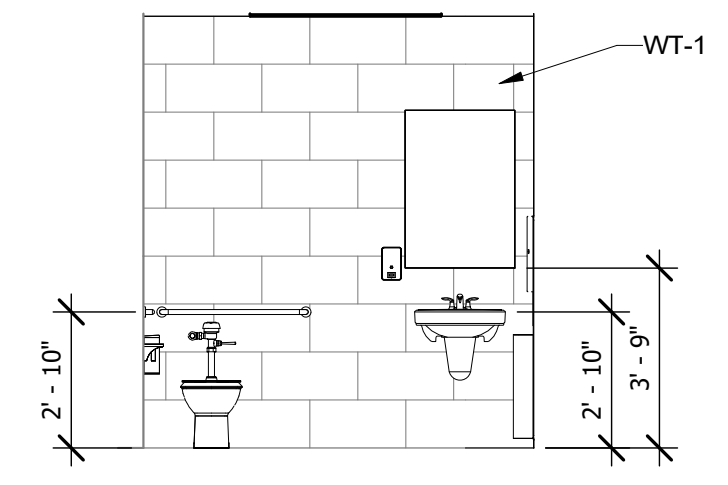
9 CONFERENCE
1/4" = 1'-0"



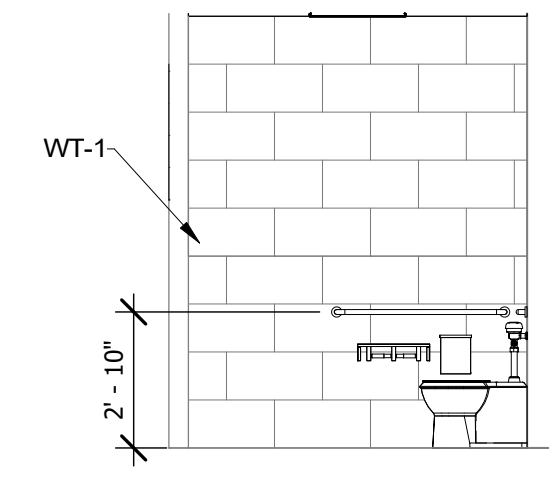
10 RR ENTRANCE
1/4" = 1'-0"



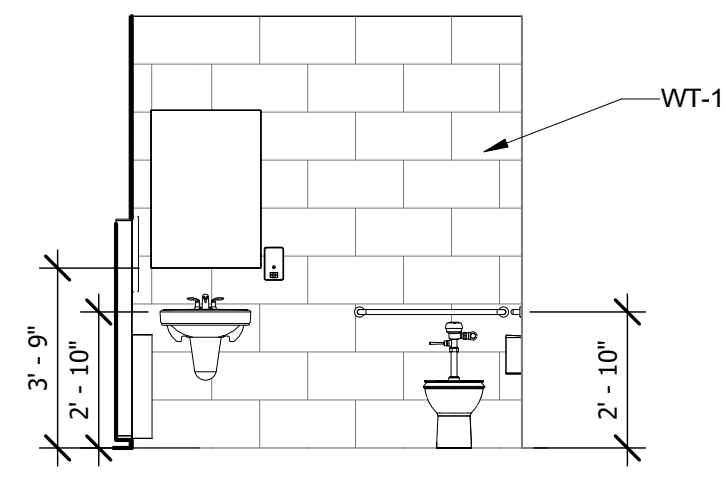
11 HALL 109
1/4" = 1'-0"



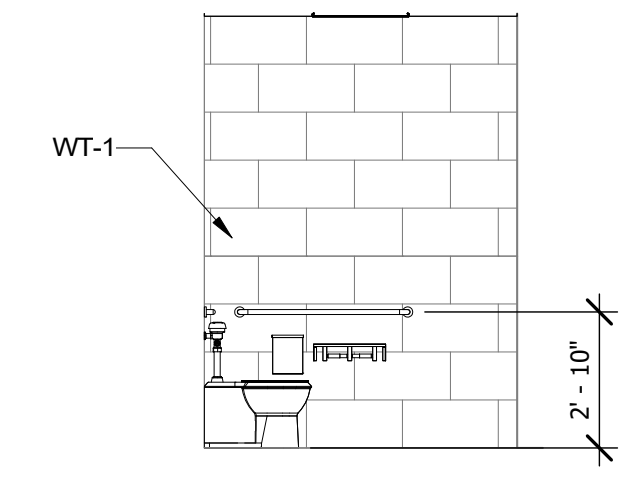
12 RR 112
1/4" = 1'-0"



13 RR 112 SW
1/4" = 1'-0"



14 RR 111
1/4" = 1'-0"



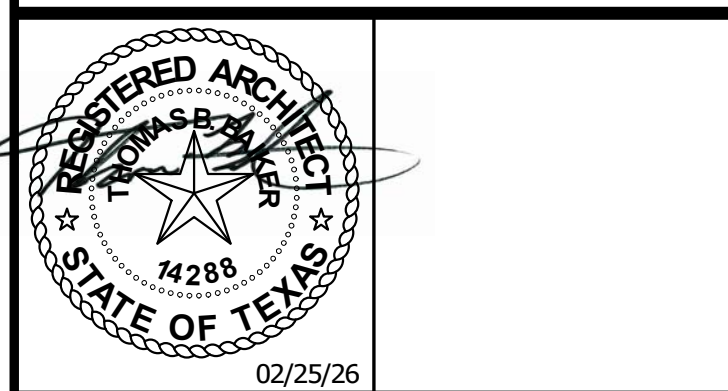
15 RR 111 SW
1/4" = 1'-0"

ISSUED FOR CLIENT APPROVAL	DATE
ISSUED FOR BIDDING	02/25/26
ISSUED FOR PERMIT	
ISSUED FOR CONSTRUCTION	

REVISIONS		
MARK	DESCRIPTION	DATE

The information, ideas, designs, details, layouts, techniques, features, arrangements, plans, sequences, dimensions, allowances, tolerances, conceptions, specifications, intentions, technology or embodiments, as illustrated, arranged, displayed, noted, recorded, indicated, represented, disclosed, evidenced, detailed or otherwise related to tangible form hereby, either expressly, inherently or by implication, are the confidential and proprietary information of SLI Design, Inc., and shall not be used for any purpose other than the specific project or undertaking identified on the drawing title block or legend for which they are and have been prepared by SLI Design, Inc. Any other reproduction, disclosure or use of any portion of the confidential and proprietary information of SLI Design, Inc., shall be a breach of the obligation of confidence created by the acceptance of this drawing from SLI Design, Inc. for a specific project or contract. Any copying, duplication, reproduction, utilization, alteration, modification, revision or change to this drawing, is expressly prohibited unless done with the prior written consent or approval of SLI Design, Inc., and shall not be undertaken without receipt of such prior written approval. This drawing is loaned by SLI Design, Inc., for the limited purpose of complying with a specific contract. The drawing remains the property of SLI Design, Inc., and shall be returned upon request or completion of the contract, unless specifically authorized by contract, under which it was loaned.

PRINT DATE: 2/25/2026 11:26:44 AM



DRAWING TITLE	
DRAWN BY	Author SHEET NO.
CHECKED BY	Checker A-10.00
APPROVED BY	Approver



PROSPERITY BANK - REMODEL
2424 MARKET STREET
GALVESTON, TEXAS 77550

Project Number : 8973

ISSUED FOR CLIENT APPROVAL	DATE
ISSUED FOR BIDDING	02/25/26
ISSUED FOR PERMIT	
ISSUED FOR CONSTRUCTION	

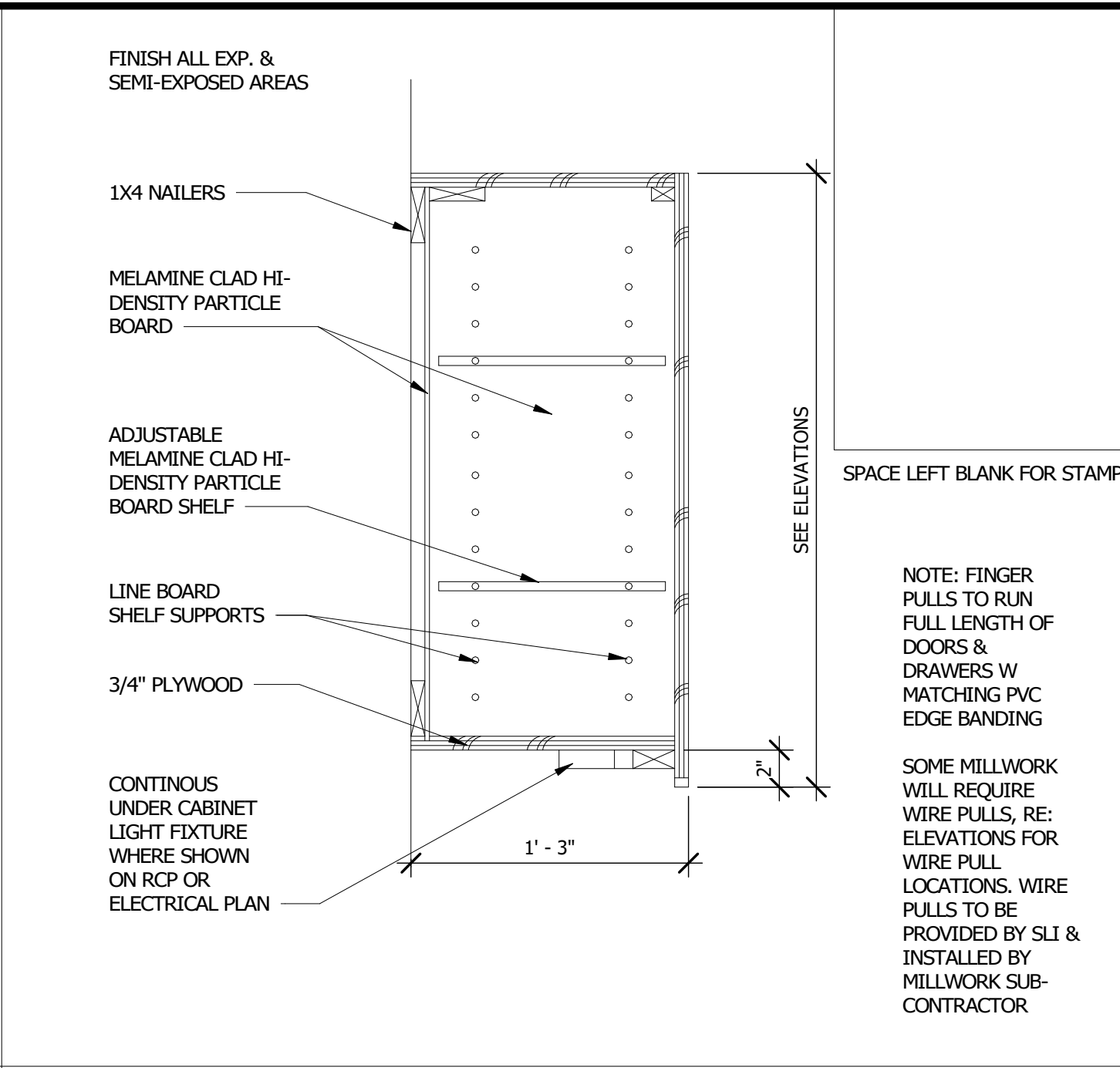
REVISIONS		
MARK	DESCRIPTION	DATE

The information, ideas, designs, details, layouts, techniques, features, arrangements, plans, sequences, dimensions, allowances, tolerances, concessions, specifications, intentions, technology or embodiments, as illustrated, arranged, displayed, noted, recorded, indicated, represented, disclosed, evidenced, detailed or otherwise related to tangible form herein, either expressly, inherently or by implication, are the confidential and proprietary information of SLI Design, Inc., and shall not be used for any purpose other than the specific project or undertaking identified on the drawing title block or legend for which they are and have been prepared by SLI Design, Inc. Any other reproduction, disclosure or use of any portion of the confidential and proprietary information of SLI Design, Inc., shall be a breach of the obligation of confidence created by the acceptance of this drawing from SLI Design, Inc. for a specific project or Contract. Any copying, duplication, reproducing, utilization, alteration, modification, revision or change to this drawing, is expressly prohibited unless done with the prior written consent or approval of SLI Design, Inc., and shall not be undertaken without receipt of such prior written approval. This drawing is loaned by SLI Design, Inc., for the limited purpose of complying with a specific Contract. The drawing remains the property of SLI Design, Inc., and shall be returned upon request or completion of the contract, unless specifically authorized by Contract, under which it was loaned.

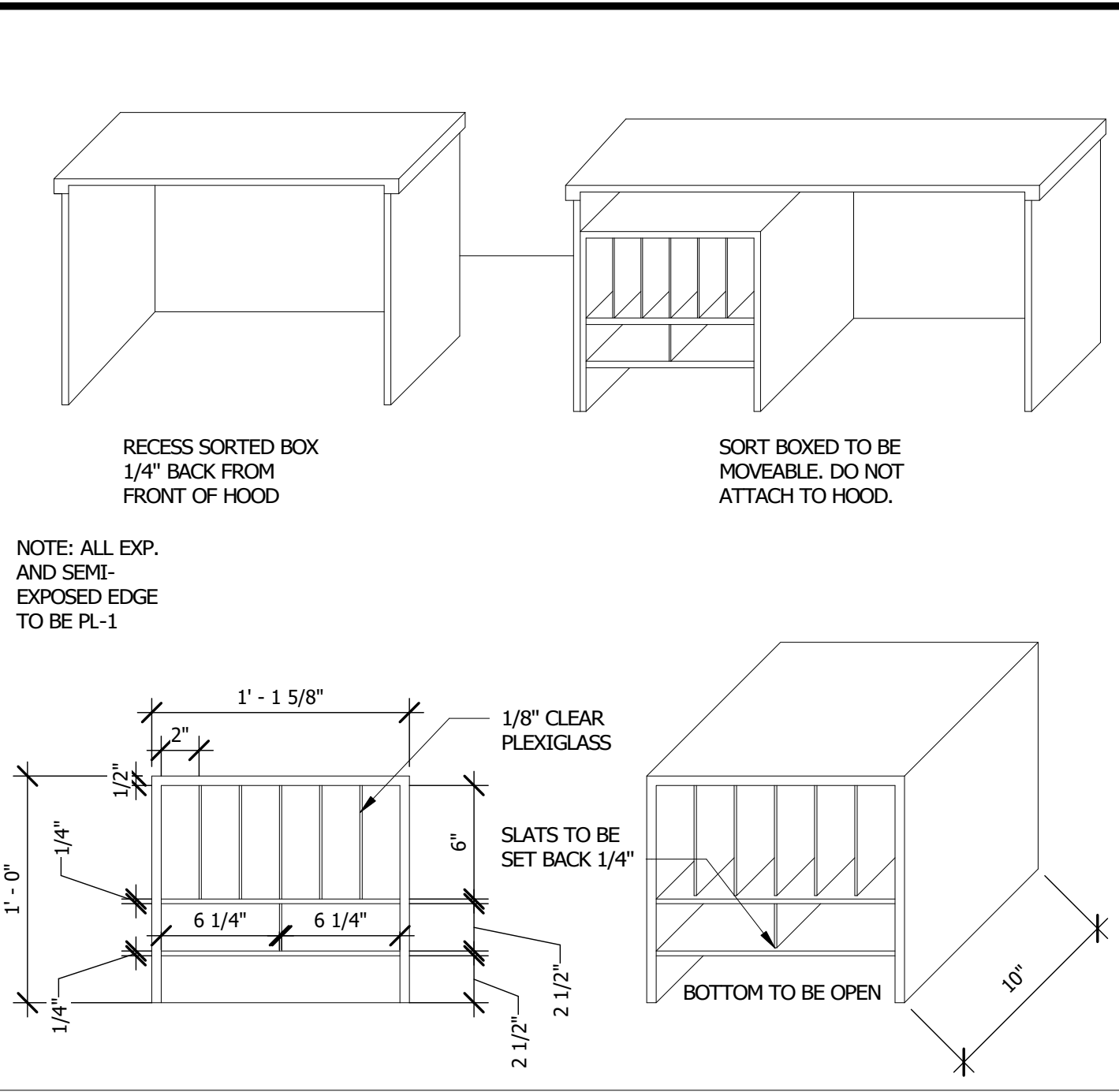
PRINT DATE: 2/25/26 11:28:49 AM



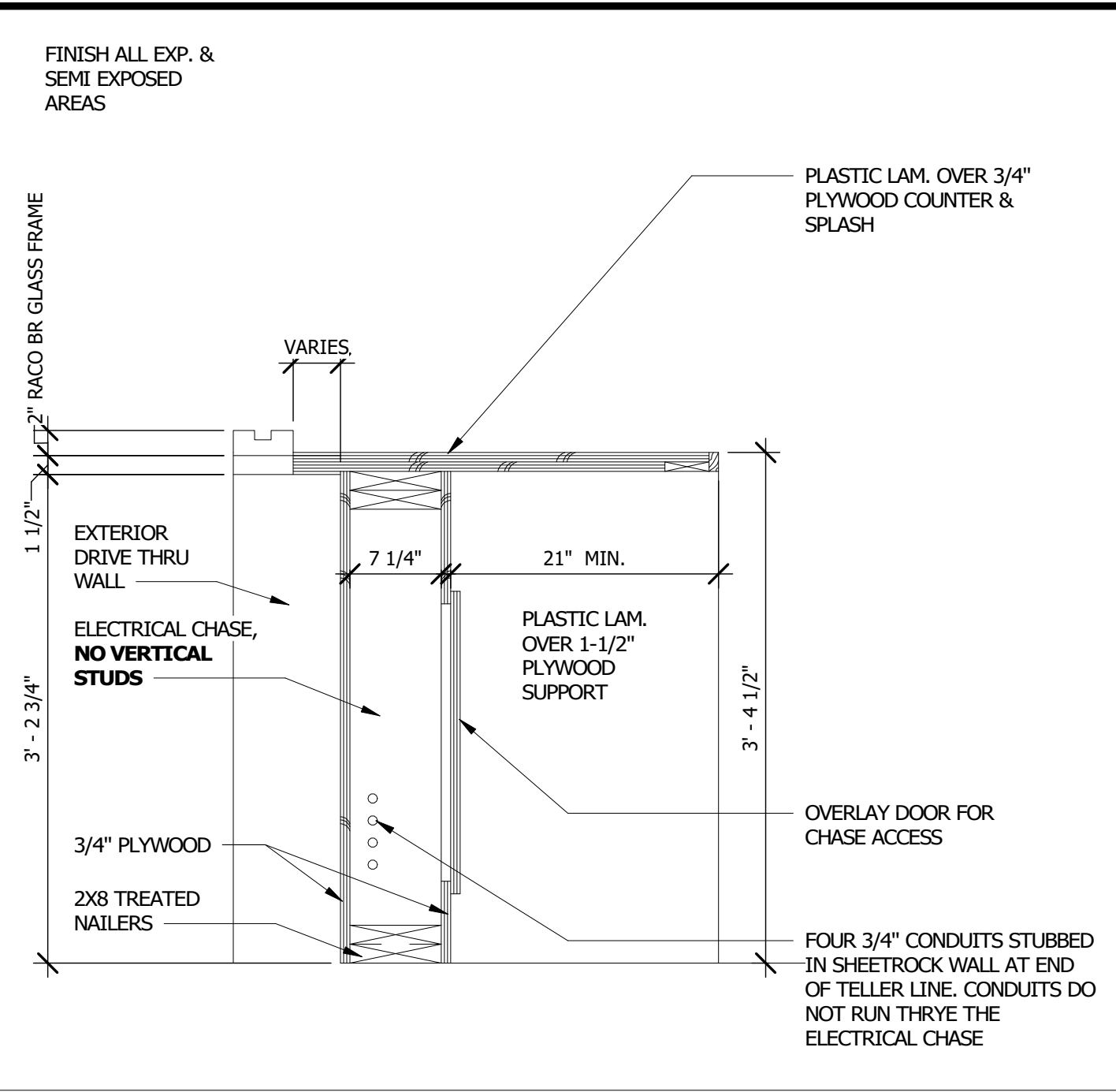
DRAWING TITLE	
MILLWORK DETAILS	
DRAWN BY	Author SHEET NO.
CHECKED BY	Checker A-11.00
APPROVED BY	Approver



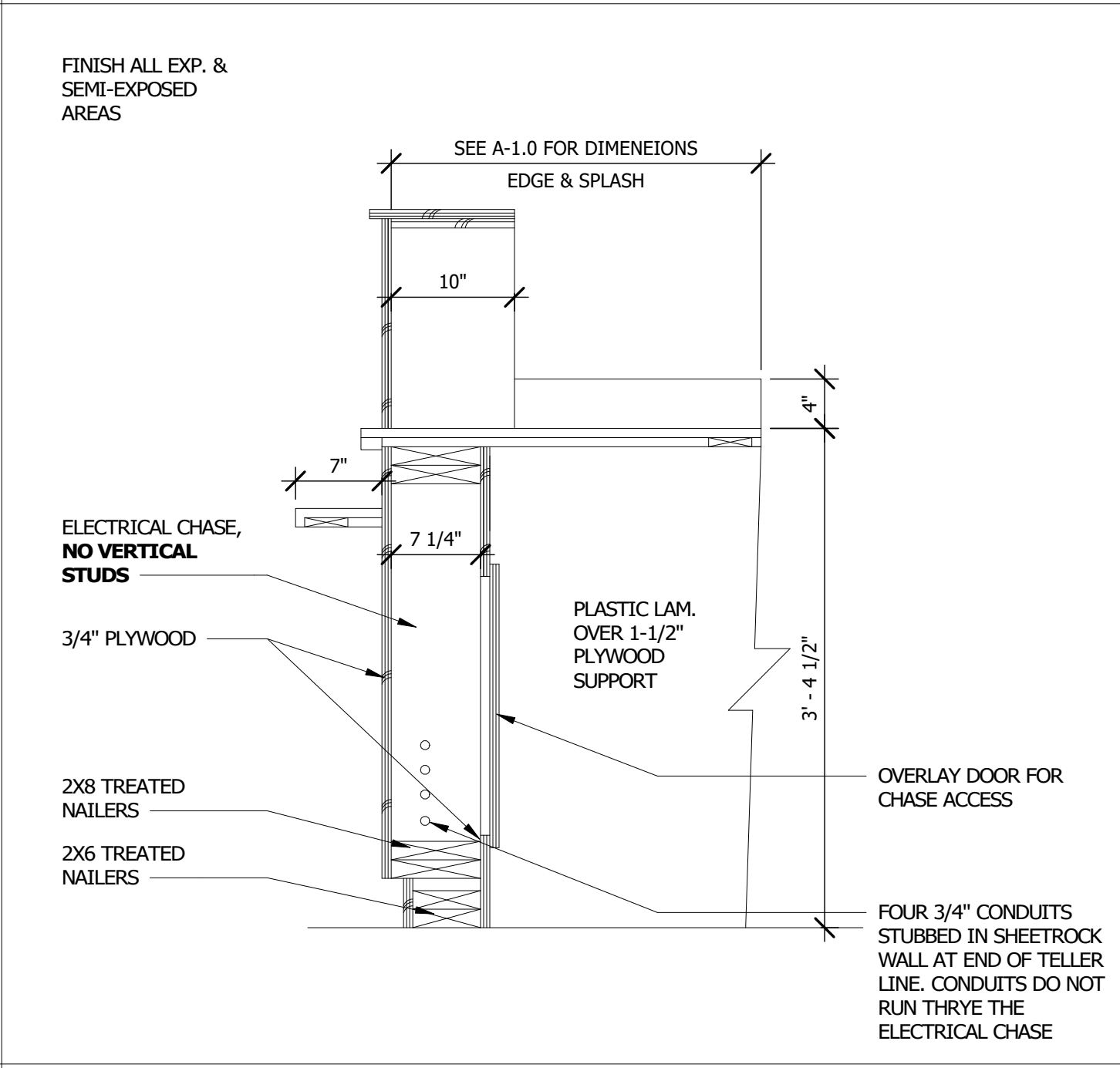
9 UPPER CABINET
1 1/2" = 1'-0"



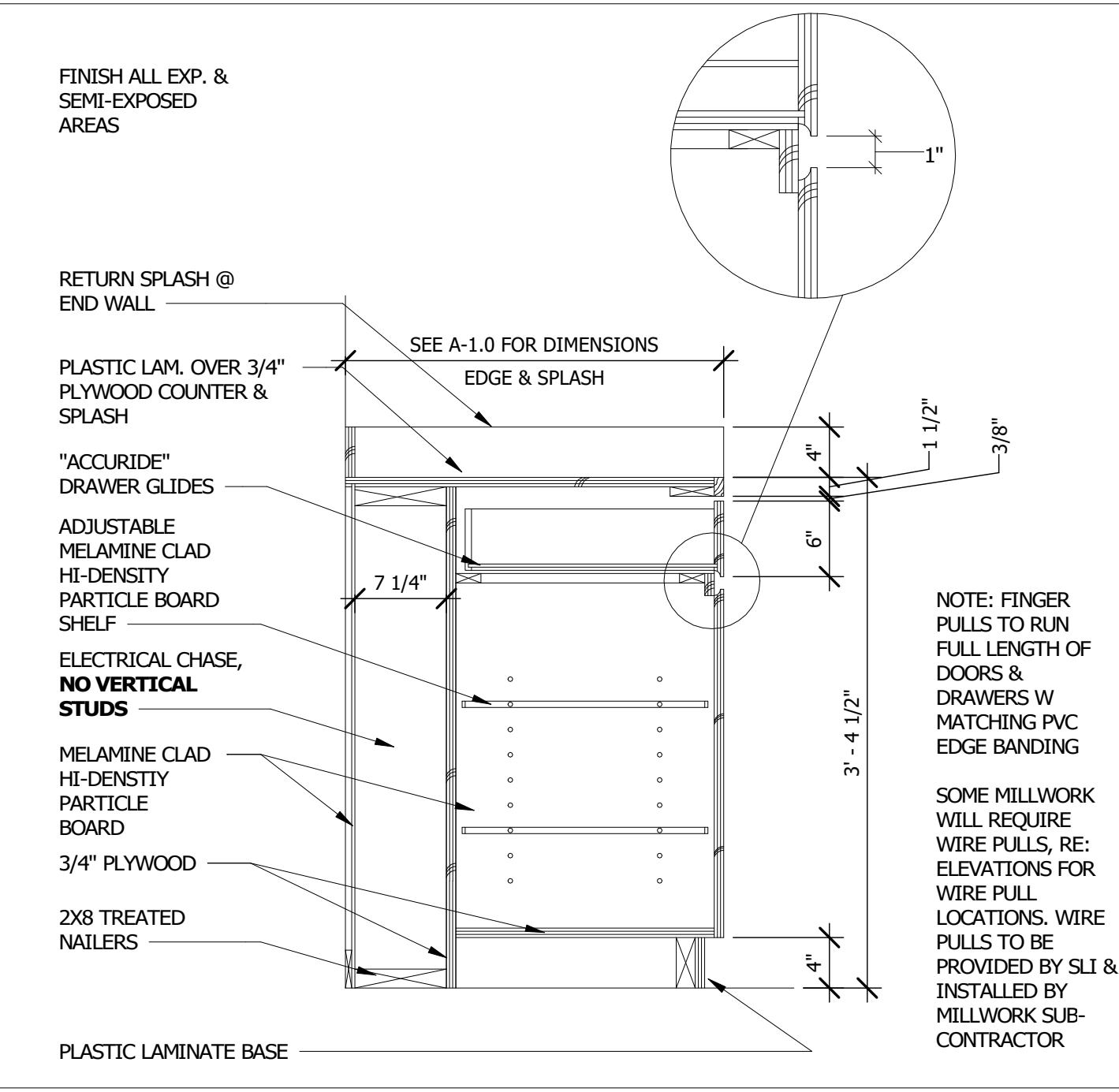
10 SORTER BOX
1 1/2" = 1'-0"



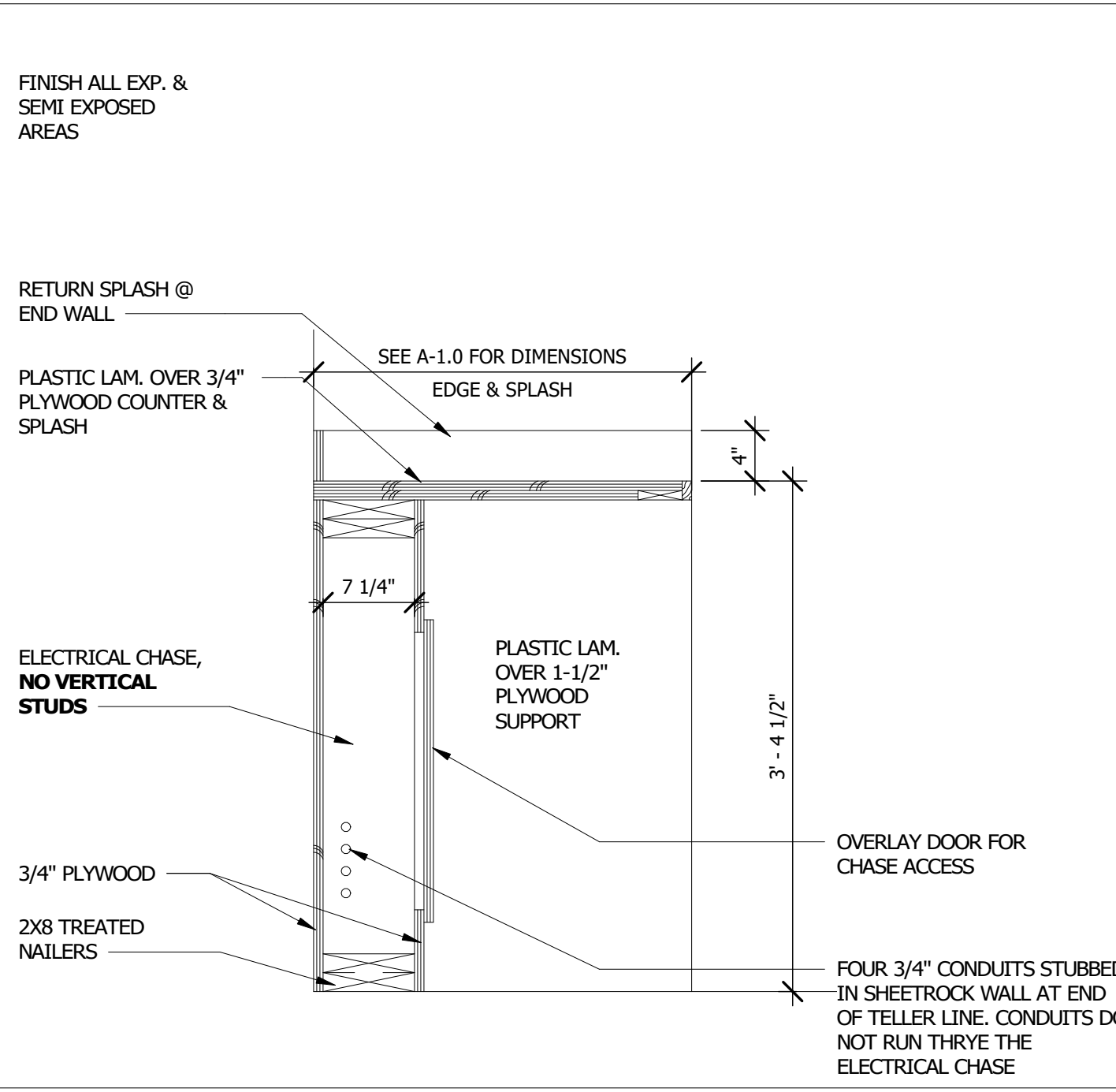
11 DRIVE THRU TELLER AT WINDOW
1" = 1'-0"



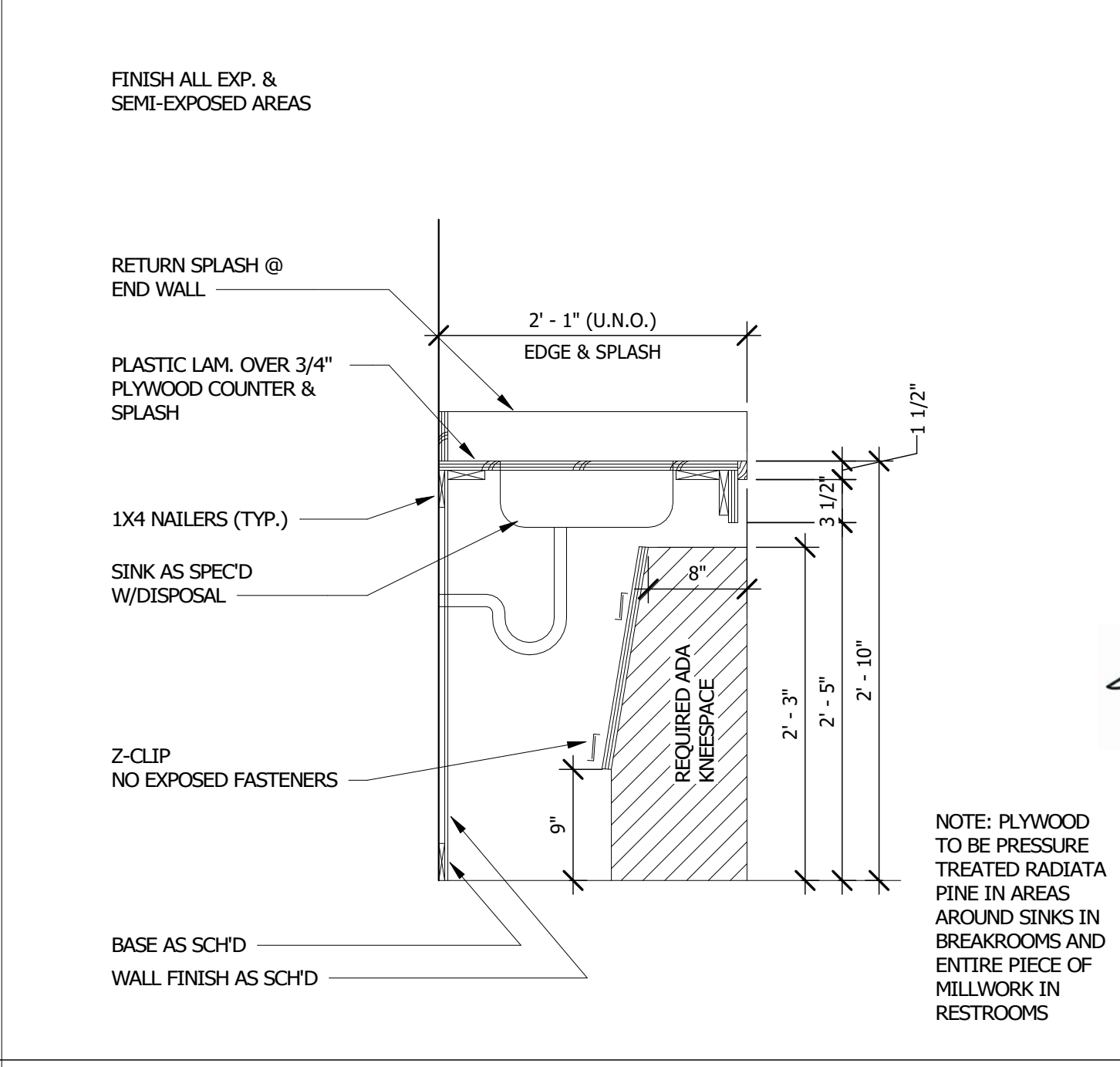
5 TELLER LINE SECTION
1" = 1'-0"



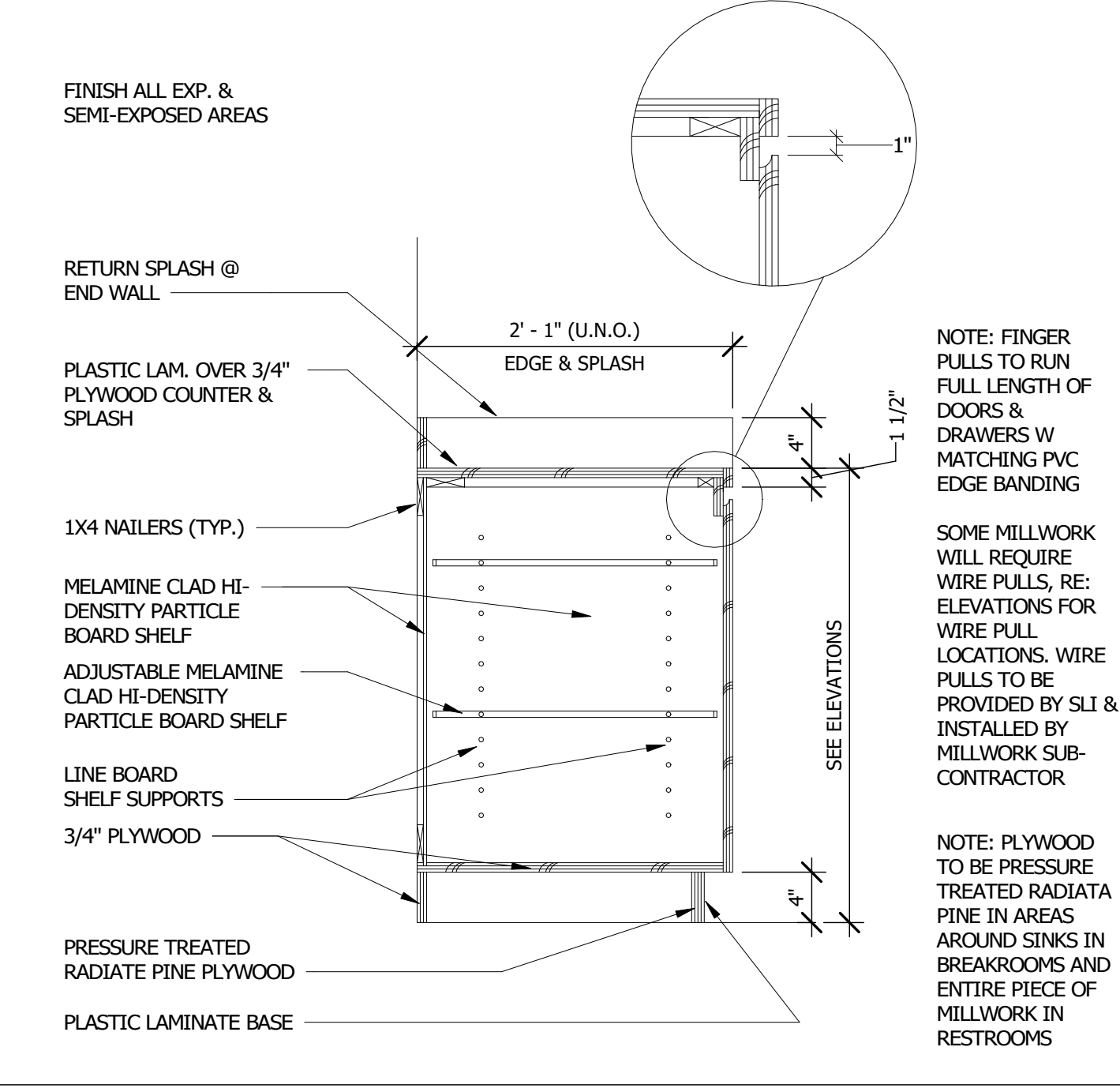
6 TELLER CABINET W CHASE
1" = 1'-0"



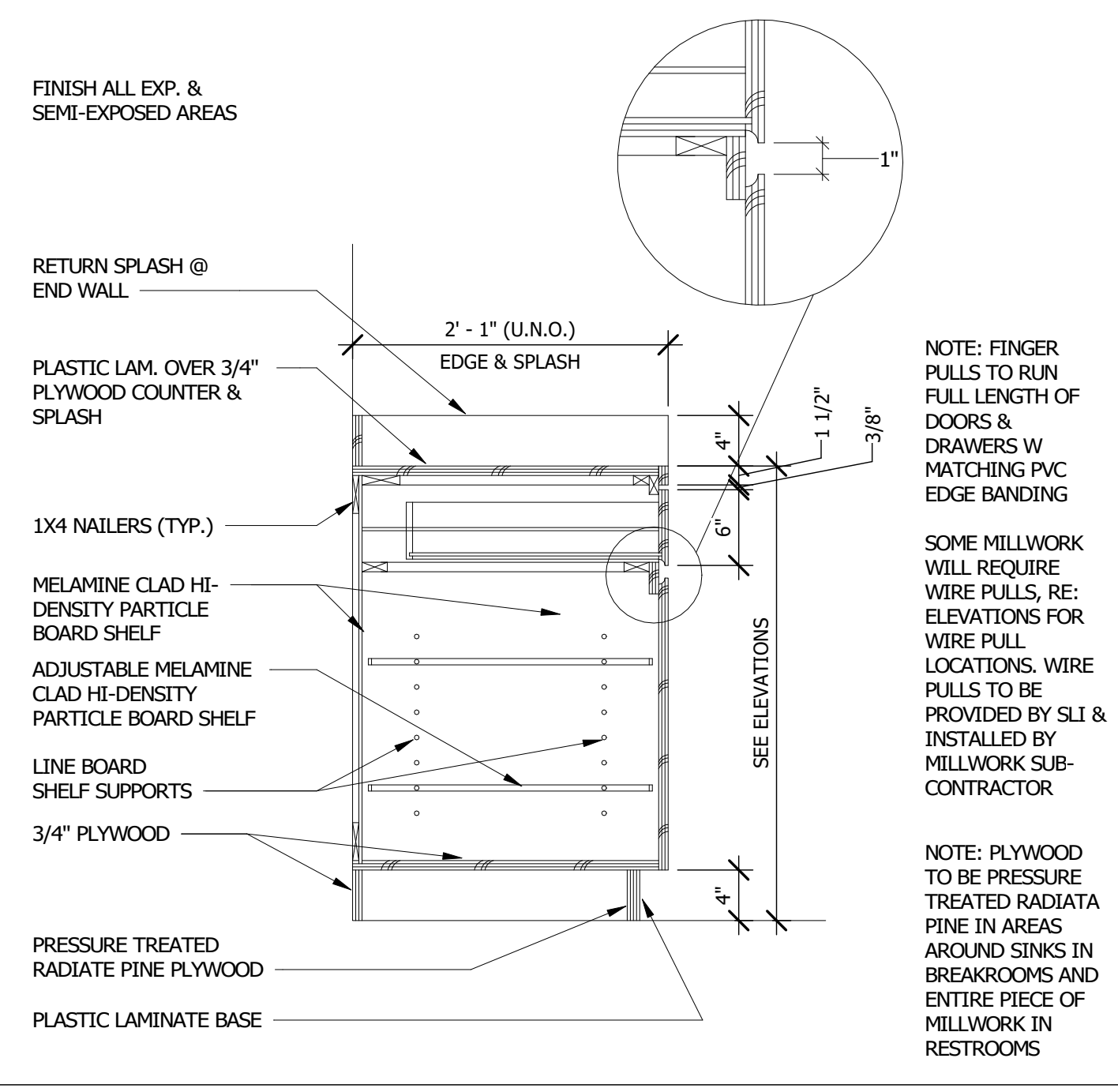
7 DRIVE THRU TELLER
1" = 1'-0"



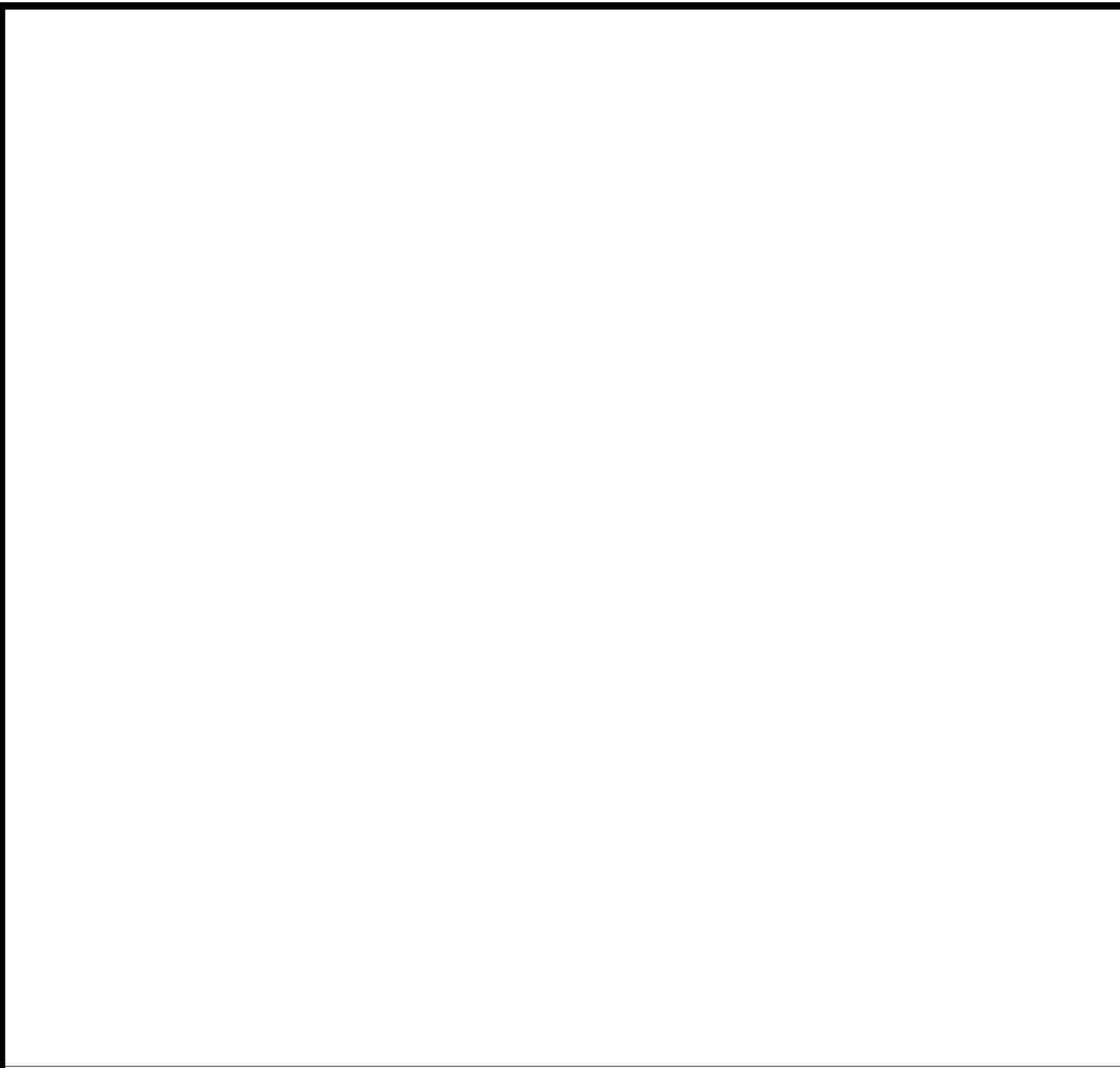
1 ADA SINK PANEL
1" = 1'-0"



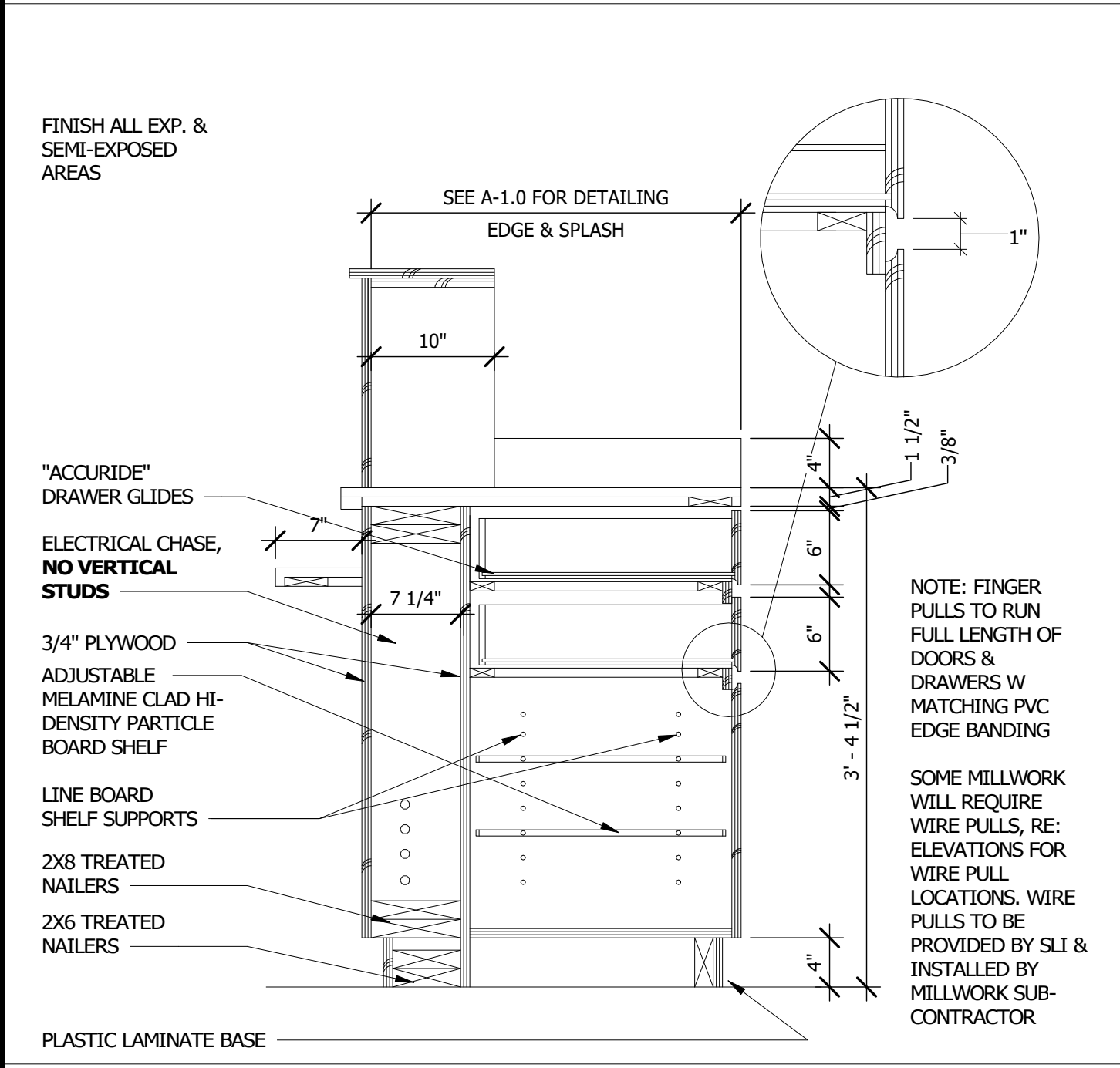
2 BASE CABINET
1" = 1'-0"



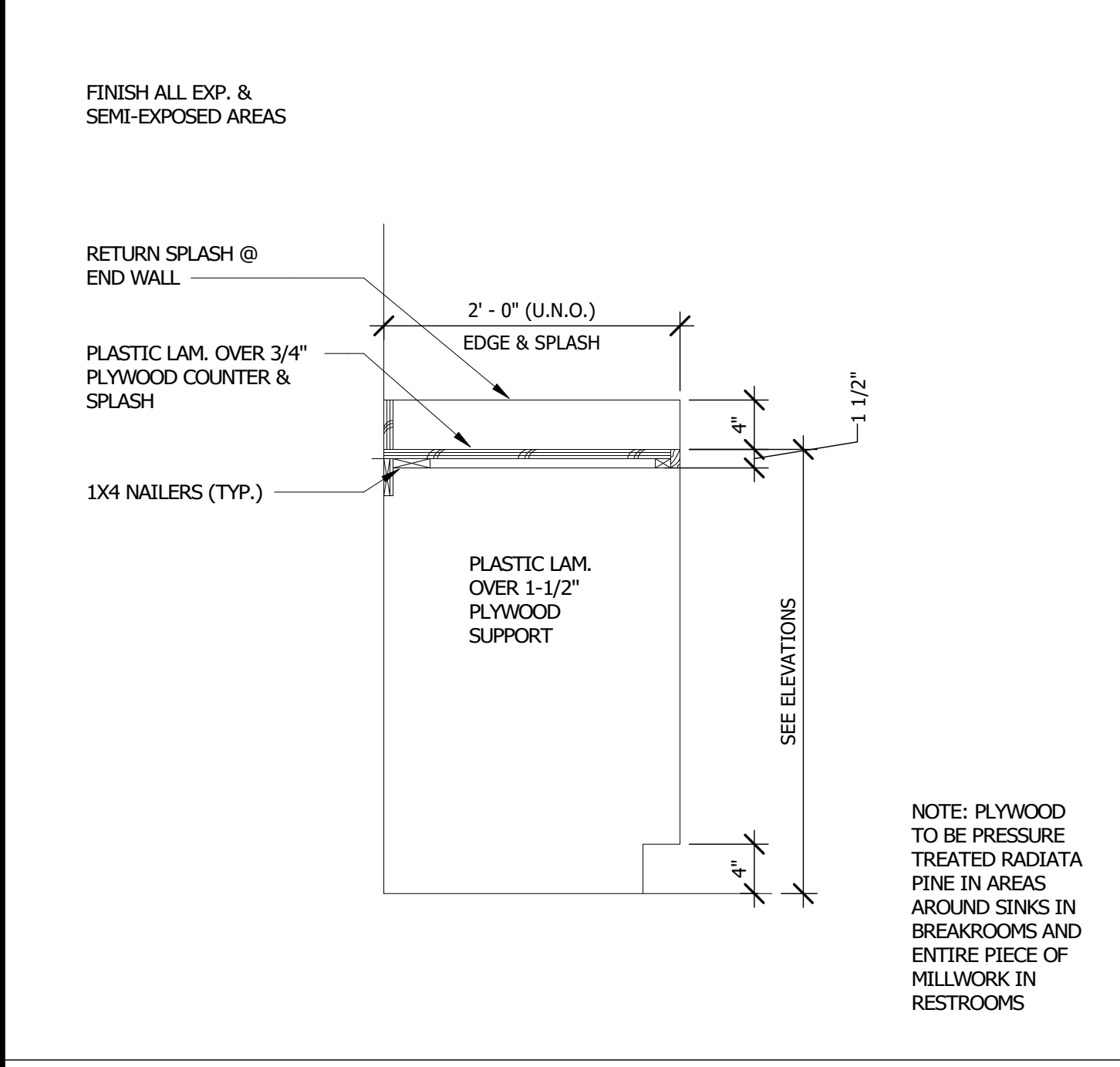
3 BASE CABINET W DRAWER
1" = 1'-0"



8 TELLER LINE CABINET
1" = 1'-0"



4 TYPICAL COUNTER
1" = 1'-0"



4 TYPICAL COUNTER
1" = 1'-0"

C:\Users\l646\Documents\Prosperity Bank - Galveston_Central model\new_millwork\NALD.rvt



ARCHITECTURE | DESIGN | CONSTRUCTION
 15810 PARK TEN PLACE, SUITE 300
 HOUSTON, TEXAS 77084
 713-465-4650
 www.sligroup.com

SPACE LEFT BLANK FOR STAMP



PROSPERITY BANK - REMODEL

2424 MARKET STREET
 GALVESTON, TEXAS 77550

Project Number : 8973

FLOORING MATERIAL LEGEND							
CODE	MFG	SERIES	COLOR	ITEM #	SIZE	NOTES	FLAME SPREAD & SMOKE DEVELOP INDEX
CA-1							CLASS I PER IBC 2015 SECTION 804.4.1,2
FT-1							CLASS I PER IBC 2015 SECTION 804.4.1,2
LVT-1							CLASS I PER IBC 2015 SECTION 804.4.1,2

BASE MATERIAL LEGEND							
CODE	MFG	SERIES	COLOR	ITEM #	SIZE	NOTES	FLAME SPREAD & SMOKE DEVELOP INDEX

WALL MATERIAL LEGEND							
CODE	MFG	SERIES	COLOR	ITEM #	SIZE	NOTES	FLAME SPREAD & SMOKE DEVELOP INDEX
PA-1	TILES 2000	ANDES	WHITE		2.5" X 7.8"		CLASS A PER IBC 2015 SECTION 803.9
WT-1							CLASS A PER IBC 2015 SECTION 803.9

PLASTIC LAMINATE MATERIAL LEGEND							
CODE	MFG	SERIES	COLOR	ITEM #	SIZE	NOTES	FLAME SPREAD & SMOKE DEVELOP INDEX
PL-1							

SOLID SURFACE MATERIAL LEGEND							
CODE	MFG	SERIES	COLOR	ITEM #	SIZE	NOTES	FLAME SPREAD & SMOKE DEVELOP INDEX
SS-1							
ST-1							

WINDOW COVERING SCHEDULE						
CODE	TYPE	MFG	MODEL #	ITEM #	FINISH	ROOMS

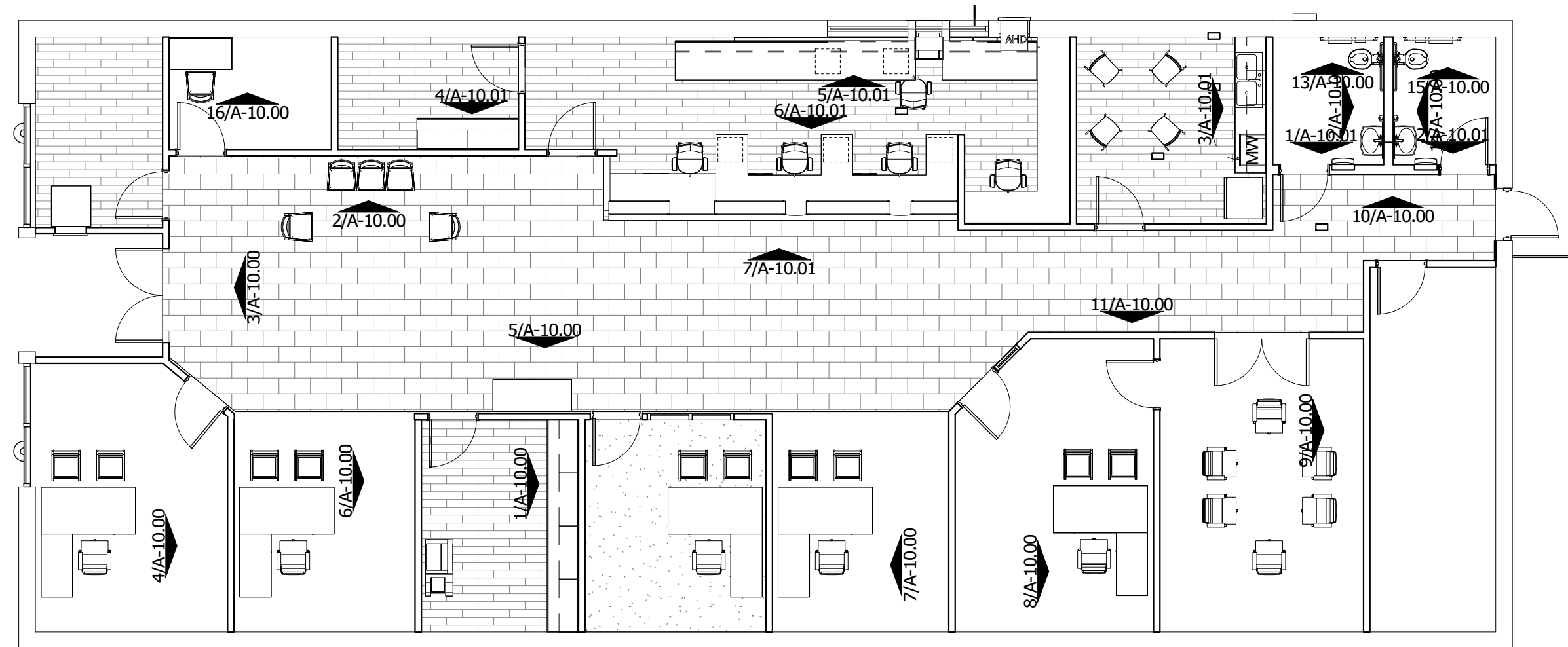
APPLIANCE SCHEDULE							
CODE	TYPE	MFG	MODEL #	ITEM #	FINISH	ROOMS	QTY
AP-2	MICROWAVE	SHARP	SMC2265GS		STAINLESS STEEL		1

EQUIPMENT SCHEDULE							
CODE	TYPE	MFG	MODEL #	ITEM #	FINISH	ROOMS	QTY
EQ-1							3

RESTROOM ACCESSORIES				
NO.	MFG	DESCRIPTION	ITEM #	QTY
RA-1	AMERICAN STANDARDS	LIQUID SOAP DISPENSER - VERTICAL - SURFACE MOUNTED	0347	2
RA-2	AMERICAN STANDARDS	36" LONG 1-1/2" DIA - SNAP FLANGE MOUNT GRAB BARS	3801-36	2
RA-3	AMERICAN STANDARDS	42" LONG 1-1/2" DIA - SNAP FLANGE MOUNT GRAB BARS	3801-42	2
RA-4	LATTITUDE RUN	39.5"H X 27.5"W BEVELED GLASS MIRROR IN SILVER	W00927359 2	2
RA-5	AMERICAN STANDARDS	TRADITIONAL™ PAPER TOWEL DISPENSER & WASTE RECEPTACLE - RECESSED	0467	2
RA-7	American Specialties Inc.	Sanitary Waste Disposal - Surface Mounted (0852)	0852	2

GENERAL NOTES	
NO.	DESCRIPTION
1	SUBMIT A 12"x12" SAMPLE OF WALL FINISHES TO SLI FOR APPROVAL
2	PROVIDE SHOP DRAWINGS FOR ALL PLASTIC LAMINATE CASE GOODS
3	ALL CARPET/VCT TRANSITIONS TO BE FLUSH
4	RUBBER TRANSITION STRIPS TO BE INSTALLED ALL OTHER TRANSITIONS; CERAMIN TO VCT
5	RUBBER TRANSITION STRIPS TO BE INSTALLED ALL OTHER TRANSITIONS; RUBBER TILE TO GLUE DOWN CARPET
6	ALL GROUT LINES TO BE SEALED
7	ALL WALL COVERING MATERIAL SUPPLIED AND INSTALLED BY SLI
8	RENO TX SCHLUTER MATERIAL TRANSITIONA STRIP TO BE INSTALLED BETWEEN CERAMIC TILE AND GLUE-DOWN CARPET
9	ALL VCT TO BE SEALED WITH 3-5 COATS OF WAX, BUFF BETWEEN COATS
10	ANY REMAINING MATERIAL TO BE GIVEN TO CLIENT AS ATTIC STOCK
11	WALKING SURFACES ALONG PATH OF EGRESS SHALL BE NON-SLIP AND ADHERED SECURELY PER IBC 2015 SECTION 1003.4
12	

ROOM FINISH SCHEDULE								
NO.	ROOM	FLOOR	BASE	WALL ▶	WALL ▲	WALL ◀	WALL ▼	CEILING
100	LOBBY	FT-1	TB-1	PA-1	PA-1	PA-1	PA-1	
101	OFFICE	CA-1	RB-1	PA-1	PA-1	PA-1	PA-1	
102	PERSONAL BANKER	CA-1	RB-1	PA-1	PA-1	PA-1	PA-1	
102	PERSONAL BANKER	CA-1	RB-1	PA-1	PA-1	PA-1	PA-1	
103	WORK ROOM	LVT-1	RB-1	PA-1	PA-1	PA-1	PA-1	
104	OFFICE	CA-1	RB-1	PA-1	PA-1	PA-1	PA-1	
105	SAFE DEPOSIT	CA-1	RB-1	PA-1	PA-1	PA-1	PA-1	
105	PERSONAL BANKER	CA-1	RB-1	PA-1	PA-1	PA-1	PA-1	
106	PRESIDENT	CA-1	RB-1	PA-1	PA-1	PA-1	PA-1	
106	PRESIDENT	CA-1	RB-1	PA-1	PA-1	PA-1	PA-1	
107	CONFERENCE	CA-1	RB-1	PA-1	PA-1	PA-1	PA-1	
108	MECH/ELEC	N/A	N/A	N/A	N/A	N/A	N/A	
109	HALLWAY	CA-1	RB-1	PA-1	PA-1	PA-1	PA-1	
110	HALLWAY	FT-1	TB-1	PA-1	PA-1	PA-1	PA-1	
111	RESTROOM	FT-1	TB-1	WT-1	WT-1	WT-1	WT-1	
112	RESTROOM	FT-1	TB-1	WT-1	WT-1	WT-1	WT-1	
113	BREAK ROOM	LVT-1	RB-1	PA-1	PA-1	PA-1	PA-1	
114	TELLERS	LVT-1	RB-1	PA-1	PA-1	PA-1	PA-1	
114	TELLERS	LVT-1	RB-1	PA-1	PA-1	PA-1	PA-1	
115	CASH ROOM	LVT-1	RB-1	PA-1	PA-1	PA-1	PA-1	
116	SAFE DEPOSIT	CA-1	RB-1	PA-1	PA-1	PA-1	PA-1	
117	HALLWAY	LVT-1	RB-1	PA-1	PA-1	PA-1	PA-1	
117	WORK ROOM	LVT-1	RB-1	PA-1	PA-1	PA-1	PA-1	
118	ATM & STORAGE	LVT-1	RB-1	PA-1	PA-1	PA-1	PA-1	



1 LEVEL 1 - FINISH PLAN
 1/8" = 1'-0"

ISSUED FOR CLIENT APPROVAL	DATE
ISSUED FOR BIDDING	02/25/26
ISSUED FOR PERMIT	
ISSUED FOR CONSTRUCTION	

REVISIONS		
MARK	DESCRIPTION	DATE
1	A-6.00	

The information, ideas, designs, details, layouts, techniques, features, arrangements, plans, sequences, dimensions, allowances, tolerances, concessions, specifications, intentions, technology or embodiments, as illustrated, arranged, displayed, noted, recorded, indicated, represented, disclosed, evidenced, detailed or otherwise reduced to tangible form hereby, either expressly, inherently or by implication, are the confidential and proprietary information of SLI Design, Inc., and shall not be used for any purpose other than the specific project or undertaking identified on the drawing title block or legend for which they are and have been prepared by SLI Design, Inc. Any other reproduction, disclosure or use of any portion of the confidential and proprietary information of SLI Design, Inc., shall be a breach of the obligation of confidence created by the acceptance of this drawing from SLI Design, Inc. for a specific project or contract. Any copying, duplication, reproducing, utilization, alteration, modification, revision or change to this drawing, is expressly prohibited unless done with the prior written consent or approval of SLI Design, Inc., and shall not be undertaken without receipt of such prior written approval. This drawing is loaned by SLI Design, Inc., for the limited purpose of complying with a specific contract. The drawing remains the property of SLI Design, Inc., and shall be returned upon request or completion of the contract, unless specifically authorized by contract, under which it was loaned.

PRINT DATE: 2/25/2026 11:34:56 AM



02/25/26

DRAWING TITLE	
FINISHED FLOOR	
DRAWN BY XX	SHEET NO.
CHECKED BY XX	A-12.00
APPROVED BY XX	

ISSUED FOR CLIENT APPROVAL	DATE
ISSUED FOR BIDDING	
ISSUED FOR PERMIT	
ISSUED FOR CONSTRUCTION	

REVISIONS		
MARK	DESCRIPTION	DATE

The information, ideas, designs, details, layouts, techniques, features, arrangements, plans, sequences, dimensions, allowances, tolerances, concessions, specifications, intentions, technology or embodiments, as illustrated, arranged, displayed, noted, recorded, indicated, represented, disclosed, evidenced, detailed or otherwise reduced to tangible form herein, either expressly, inherently or by implication, are the confidential and proprietary information of SLI Design, Inc., and shall not be used for any purpose other than the specific project or undertaking identified on the drawing title block or legend for which they are and have been prepared by SLI Design, Inc. Any other reproduction, disclosure or use of any portion of the confidential and proprietary information of SLI Design, Inc., shall be a breach of the obligation of confidence created by the acceptance of this drawing from SLI Design, Inc. for a specific project or Contract. Any copying, duplicating, reproducing, utilization, alteration, modification, revision or change to this drawing, is expressly prohibited unless done with the prior written consent or approval of SLI Design, Inc., and shall not be undertaken without receipt of such prior written approval. This drawing is loaned by SLI Design, Inc., for the limited purpose of complying with a specific Contract. The drawing remains the property of SLI Design, Inc., and shall be returned upon request or completion of the contract, unless specifically authorized by Contract, under which it was loaned.

PRINT DATE: 2/11/2026 10:17:27 AM

--	--

DRAWING TITLE	
PLUMBING SCHEDULES & DETAILS	
DRAWN BY	JE
CHECKED BY	JE
APPROVED BY	JE
SHEET NO.	P3.02

JONES ENGINEERS, L.P.
 Consulting Mechanical/Electrical/Plumbing Engineers
 9820 Whitthorn Dr. Houston, Texas 77095 (713)222-7766
 Texas Registered Engineering Firm #F-3811

INTERIM REVIEW ONLY
 Document Incomplete: Not intended for permit or construction.
 Engineer: N. Curt Jones, P.E.
 P.E. Serial No.: 58428
 Date: 11 FEBRUARY 2026

PLUMBING FIXTURE AND CONNECTION SCHEDULE								
MARK	FIXTURE	ROUGH-IN CONNECTION SIZE				MANUFACTURER	MODEL	DESCRIPTION AND NOTES
		C.W.	H.W.	VENT	WASTE			
L-1	LAVATORY (WALL HUNG)	1/2"	1/2"	1-1/2"	2"	AMERICAN STANDARD	LUCERNE 0365.012	WALL HUNG VITREOUS CHINA LAVATORY WITH CHICAGO FAUCET 420-E2805ABCP FAUCET, GRID DRAIN, CHROME PLATED P-TRAP WITH CLEANOUT AND ADA STOP & TRAP PROTECTORS AS REQUIRED. COORDINATE WITH ARCHITECT. INSTALL WITH WATTS #LFMMV, ASSE 1070 COMPLIANT THERMOSTATIC MIXING VALVE.
WC-1	WATER CLOSET (ADA)	1-1/2"	2"	4"		AMERICAN STANDARD	MADERA 3641.001	FLOOR MOUNT, VITREOUS CHINA, TOP SPUD TOILET WITH ELONGATED BOWL AT 17" ADA HEIGHT, WITH SLOAN ROYAL #111, 1.28 GPF, HARD WIRED AUTOMATIC FLUSHVALVE.

PLUMBING PIPE MATERIALS	
SYSTEM:	MATERIAL:
WATER PIPE, ABOVE GRADE	TYPE 'L' COPPER
WATER PIPE, BELOW GRADE	TYPE 'K' COPPER
SANITARY SEWER & VENT, ABOVE GRADE	CAST IRON NO HUB
SANITARY SEWER & VENT, BELOW GRADE	SCHEDULE 40 PVC
FIRE SPRINKLER LINE	BLACK STEEL
STORM, ABOVE GRADE	CAST IRON NO HUB
STORM, BELOW GRADE	SCHEDULE 40 PVC
NATURAL GAS	SCHEDULE 40 BLACK STEEL



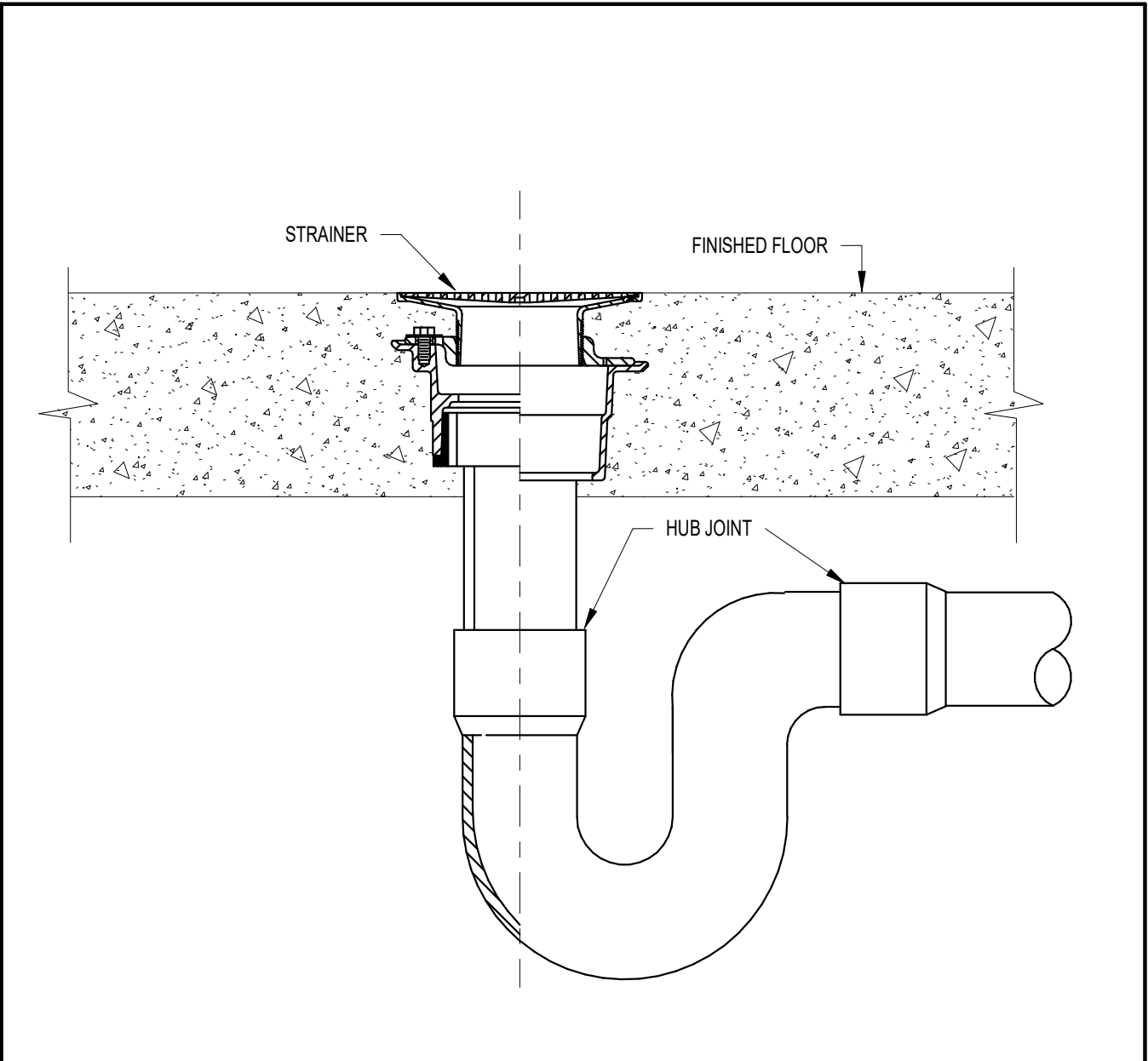
IMPORTANT NOTES:

- THIS TRAP GUARD INSERT CAN BE INSTALLED INTO ANY ZURN # 415 DRAIN TOPS TO PREVENT SEWER GAS EMISSION.
- THE EXTRA WIDE FLANGE NEEDS TO HAVE AN ADHESIVE TYPE CAULK INSTALLED AROUND THE BOTTOM EDGE.
- MOST Z415 TAILPIECES HAVE 4 PROTRUSIONS INSIDE THE 3-1/2" OPENING SO THE SEAL MUST BE MADE AROUND THE EDGE OF THE TG FLANGE. MAKE SURE INSIDE OF TAILPIECE IS CLEAN.

IF THE TRAP GUARD DEVICE SHOULD GET DAMAGED OR IMPAIRED IN ANY WAY, THE DEVICE CAN BE EASILY REMOVED BY USING A SHARP SCREW DRIVER UNDER THE FLANGE.

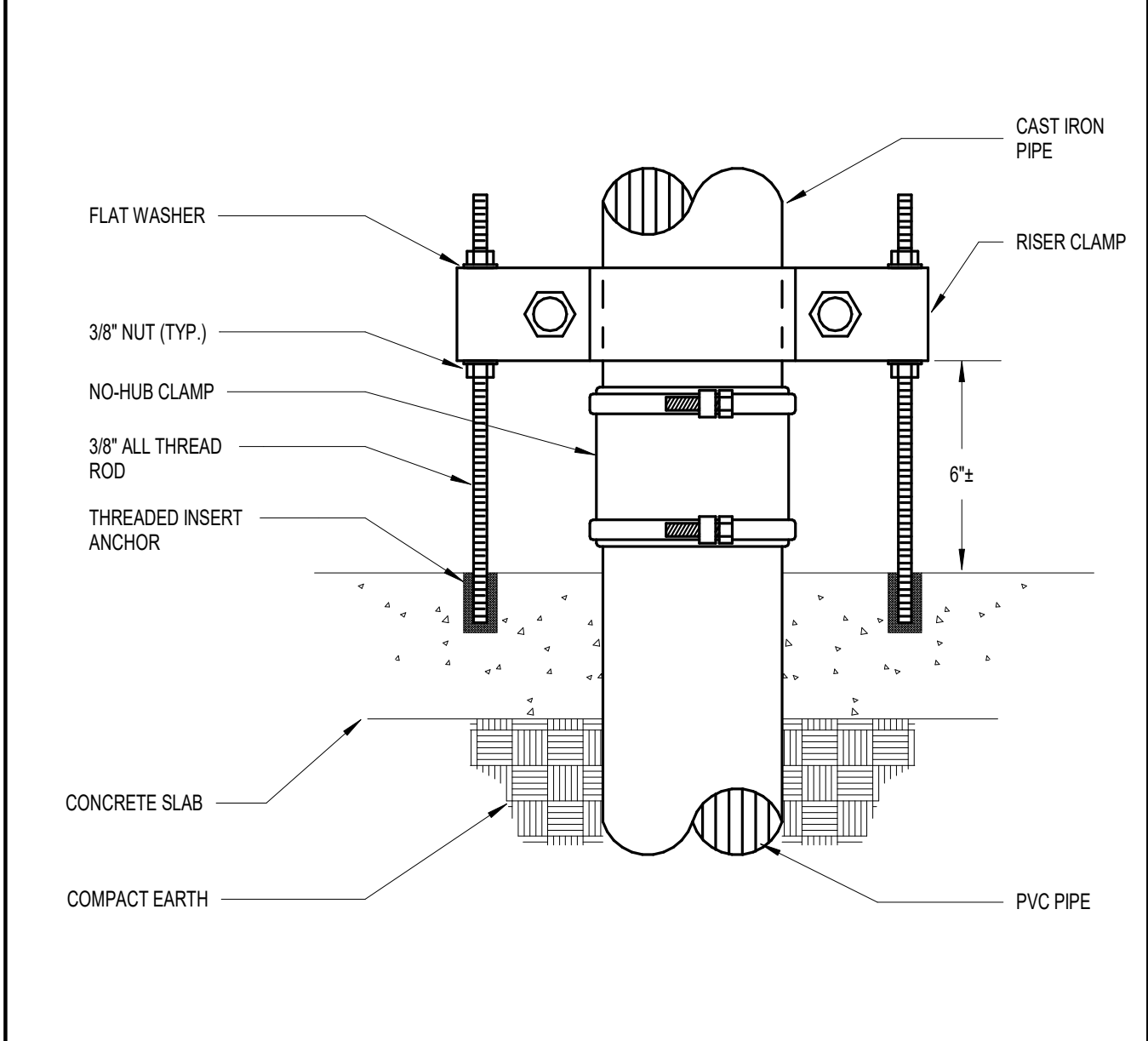
NOTE: CARE SHOULD BE TAKEN NOT TO TOUCH THE ELASTOMERIC FLEXIBLE MATERIAL WITH THE PRIMER.

NO FIRE RATINGS ARE REQUIRED FOR UNDERGROUND PIPING OR OPENINGS

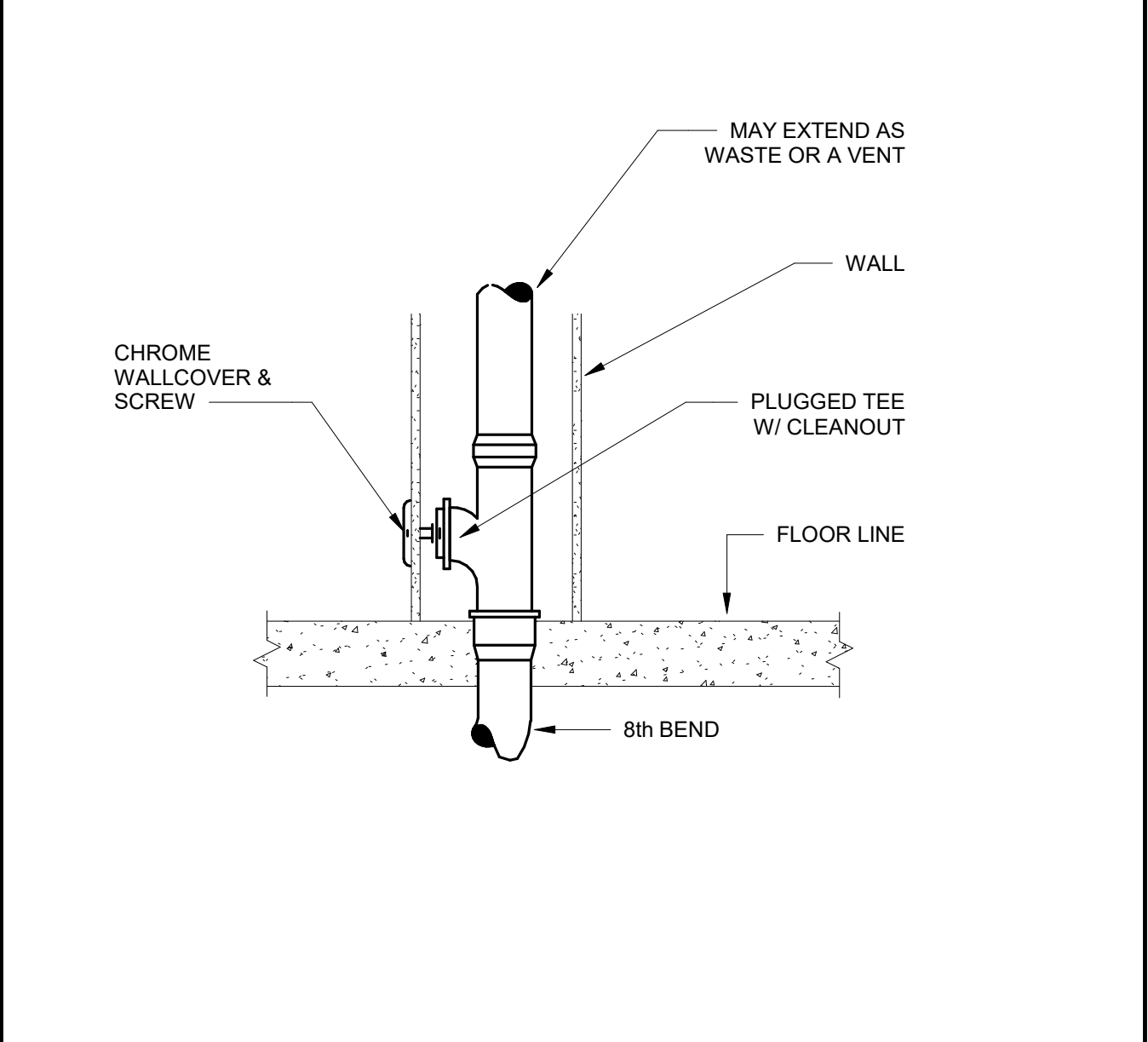


5 TYPICAL FLOOR DRAIN DETAIL
NOT TO SCALE

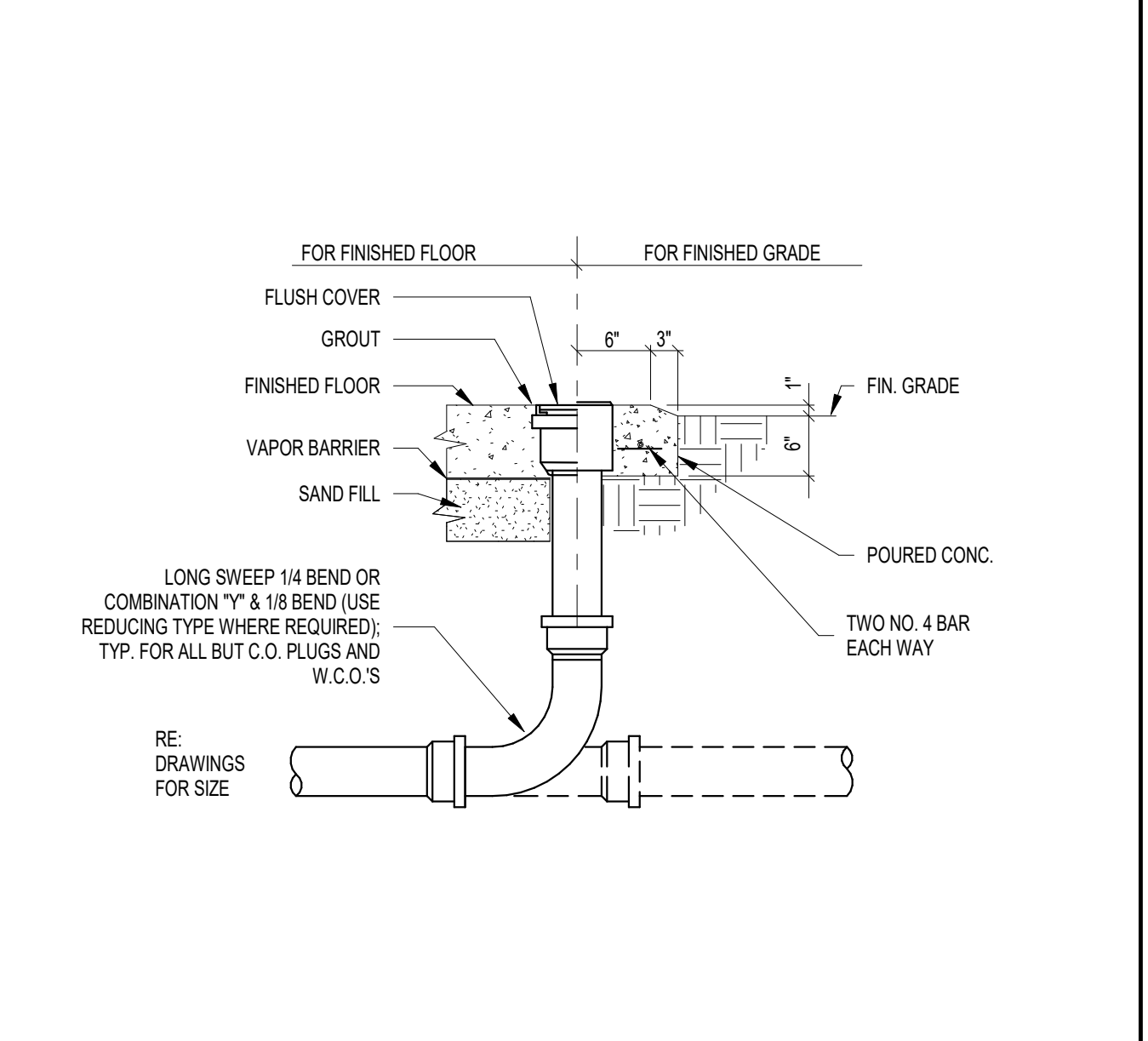
6 TRAP GUARD INSERT DETAIL
NOT TO SCALE



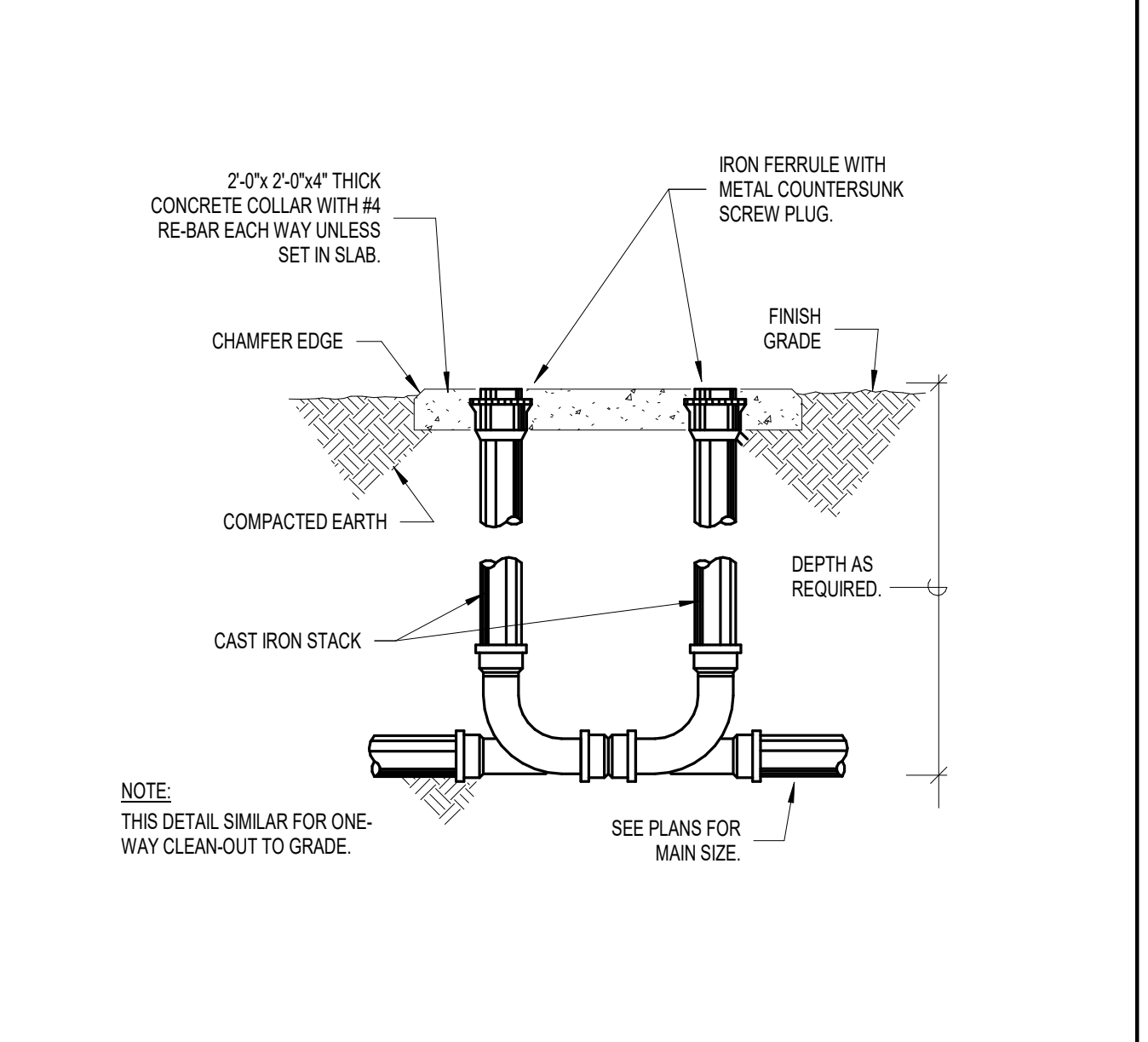
4 CAST IRON TO PVC TRANSITION DETAIL
NOT TO SCALE



3 WALL CLEANOUT
NOT TO SCALE



2 TYPICAL CLEANOUT DETAIL
NOT TO SCALE



1 2-WAY CLEANOUT DETAIL
NOT TO SCALE

